

Surface Mode:  
**Transparency**

**CHEMETAL®**





## Chemetal at its most colorful.

Introducing Transparency, colorful new laser cut designs on thicker aluminum panels. Featuring 9 designs in 8 new colors, plus a custom frame system, Transparency is the latest in Chemetal's Surface Mode collection.

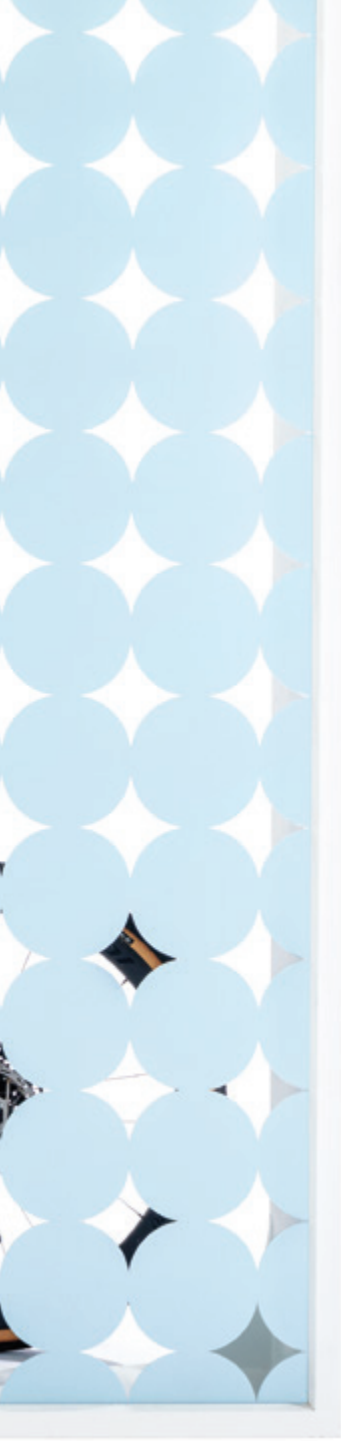
[chemetal.com](http://chemetal.com)

**CHEMETAL®**









## Transparency goes anywhere.

Made on thicker aluminum panels, metal designs from the Transparency collection can go just about anywhere. They can be installed without a wood backer. This opens up a world of options, from layered and illuminated feature walls, suspended ceiling panels, dividing screens and more.

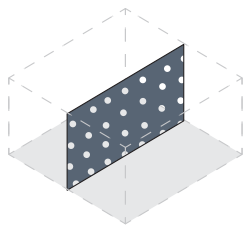
[chemetal.com](http://chemetal.com)

**CHEMETAL®**

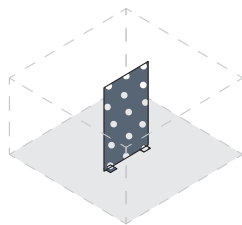




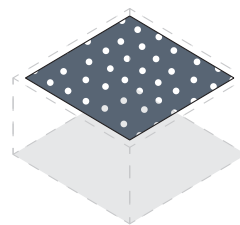
# Applications



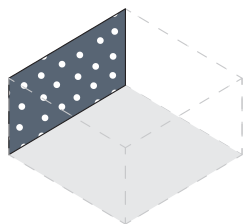
Room Divider



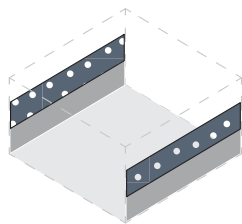
Freestanding Partition



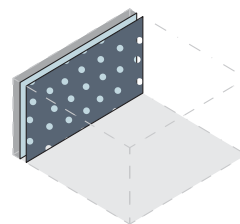
Ceiling Panel



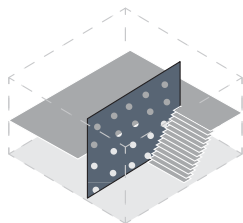
Wall Covering



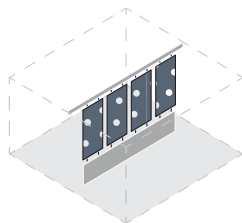
Half Wall Screen



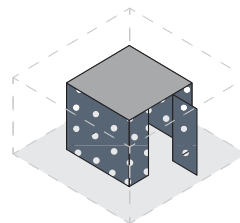
Layered Wall Panel



Stair Partition



Suspended Screen



Enclosure



So beautiful you'll want to frame it.

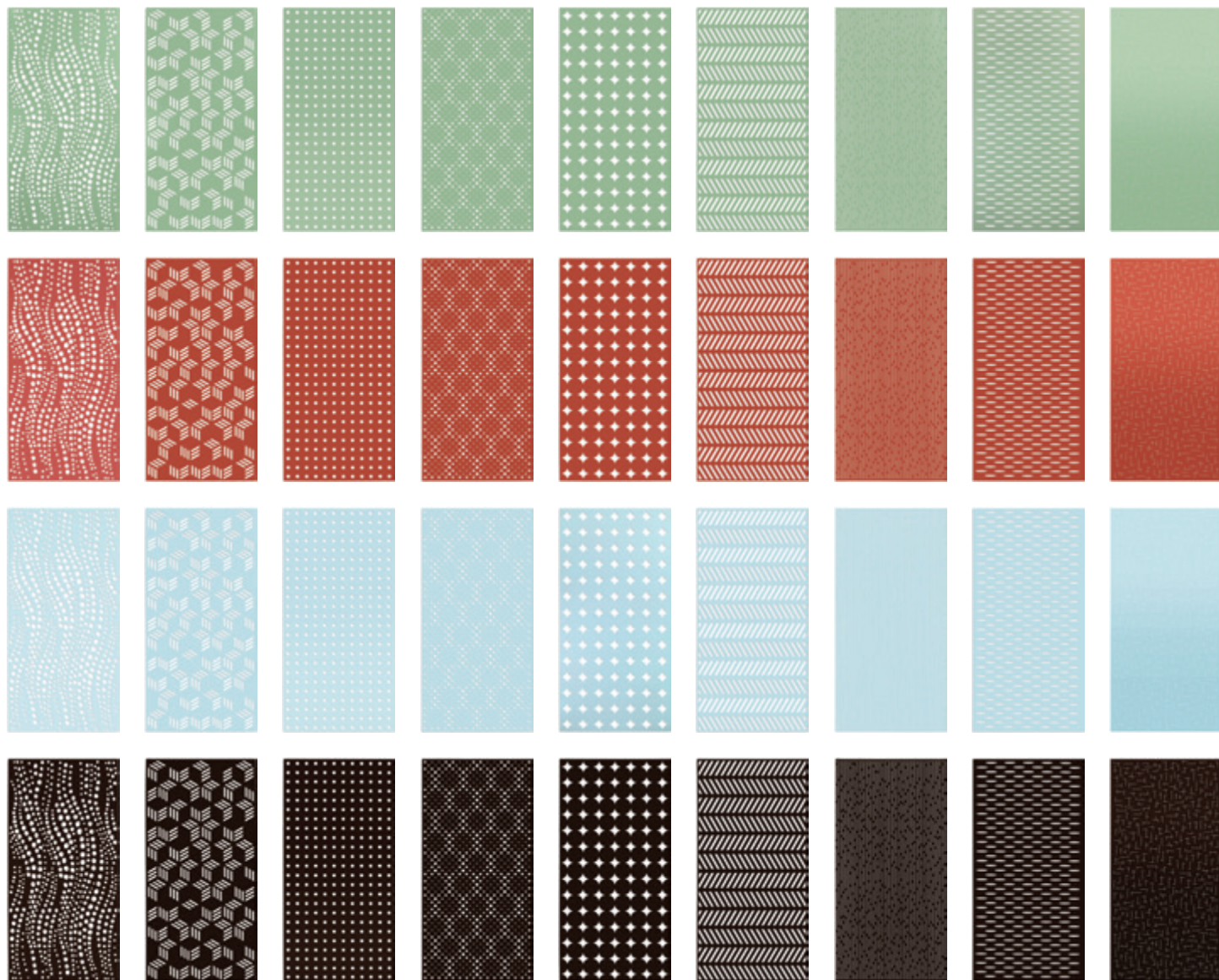
And you can. Transparency offers an optional frame system that fits panels up to 4' x 8' and is ideal as a freestanding room divider, hanging frame, and more. Available standard in white powder coat. Cut-to-size and custom colors available.

**CHEMETAL®**



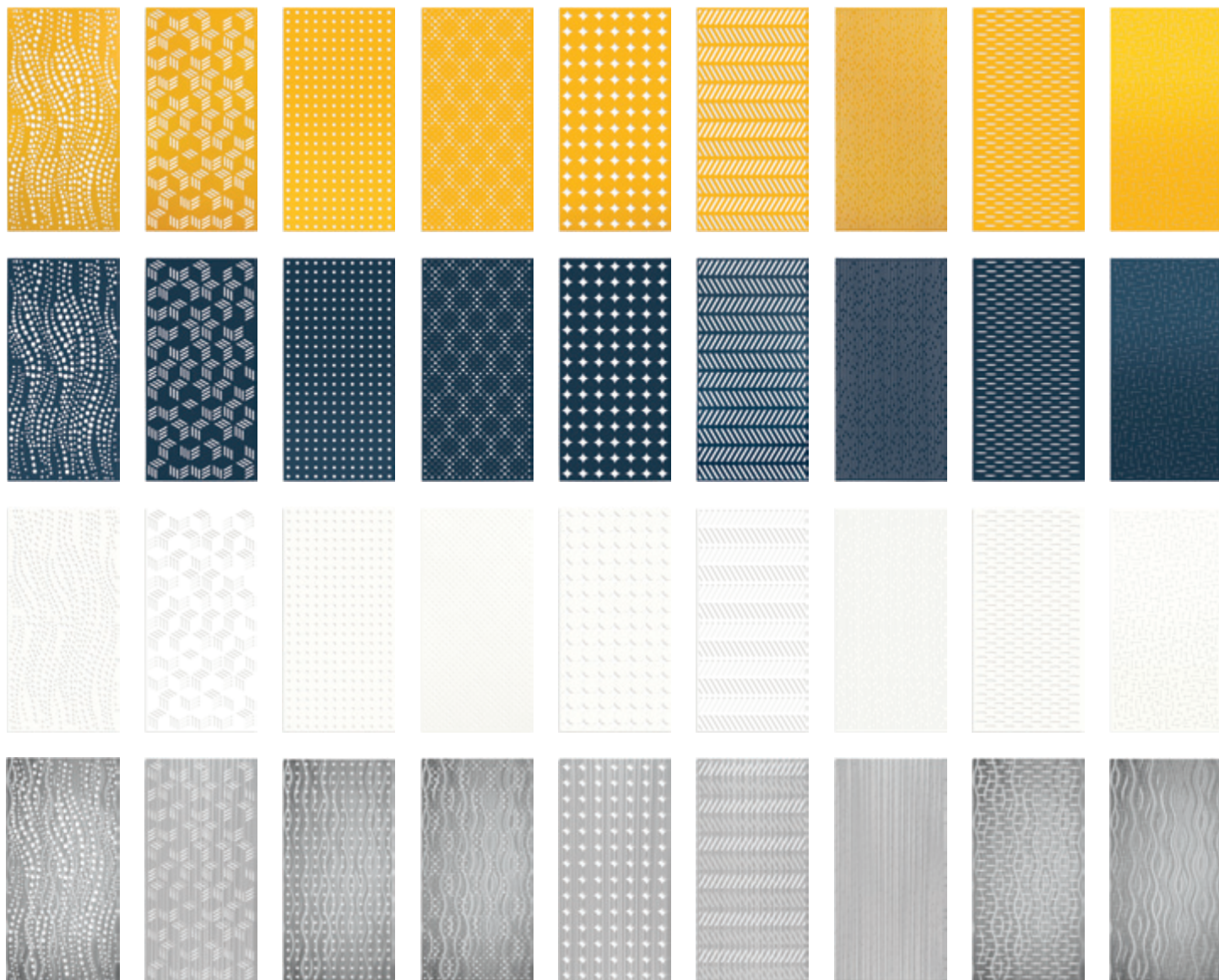






The design standards. Plus custom.





Transparency is available in 9 new designs and 8 colors. Biomorphic, mid-century, and futuristic patterns abound in myriad colorways. Plus, our team can work with designers to craft custom patterns and match RAL or Pantone colors for branding.



#571

Avatar

**Specifications:**

Size: 96" x 48" | Thickness: .063" or .090"  
Weight (approx.): 25 lbs. (.063"), 40 lbs. (.090")

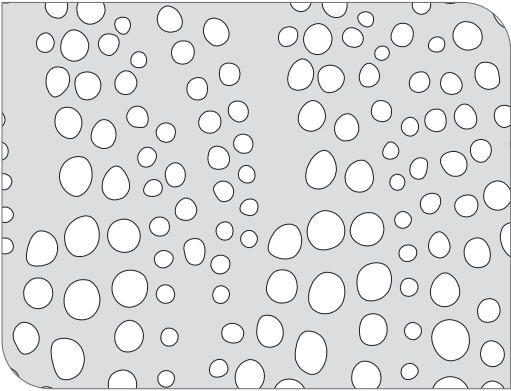
**Ordering:**

Specify pattern and color. Ex: 'Chemetal 571 SY'  
for #571 Avatar with a Sky Blue powder coat.

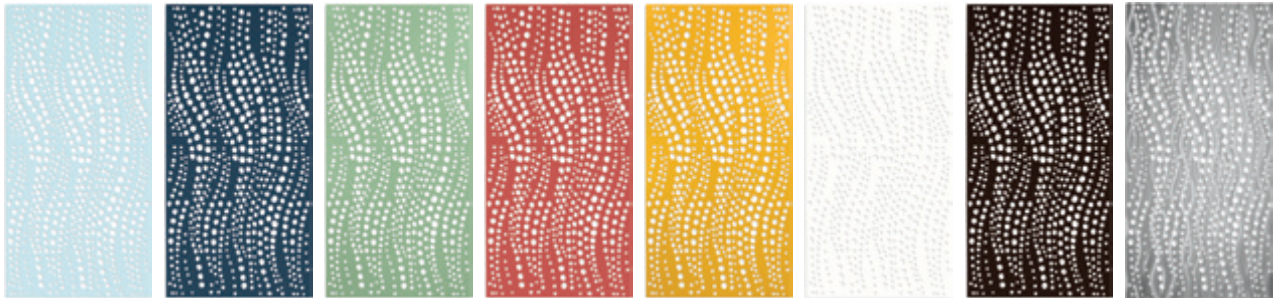
**Customization:**

Standard patterns are a jumping off point for  
custom designs and sizes (4' x 8' or less).  
See more on "Your Metal Design Team" page.

**Pattern Detail:**



**Colorways:**



SY SKY

IG INDIGO

SF SEAFOAM

TR TERRACOTTA

SA SAFFRON

AR ARCTIC

CR CHARCOAL

CB BRUSHED

SURFACE MODE: **TRANSPARENCY**

**CHEMETAL**



# #572

# Cubed

## Specifications:

Size: 96" x 48" | Thickness: .063" or .090"  
Weight (approx.): 25 lbs. (.063"), 40 lbs. (.090")

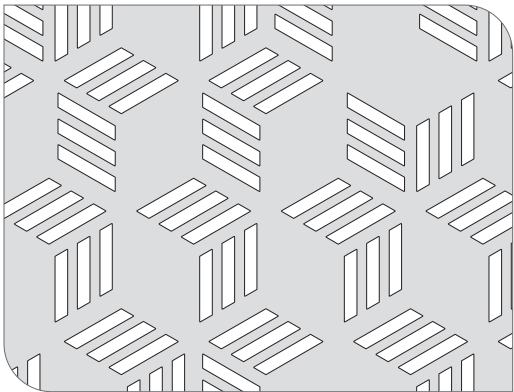
## Ordering:

Specify pattern and color. Ex: 'Chemetal 572 SY'  
for #572 Cubed with a Sky Blue powder coat.

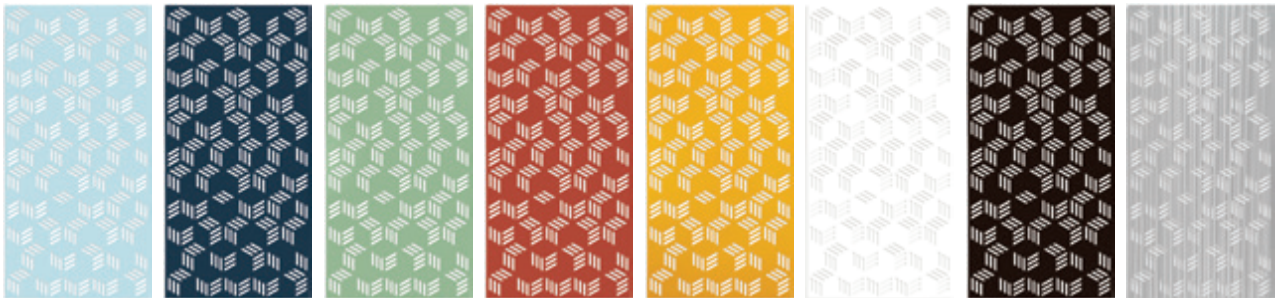
## Customization:

Standard patterns are a jumping off point for  
custom designs and sizes (4' x 8' or less).  
See more on "Your Metal Design Team" page.

## Pattern Detail:



## Colorways:



SY SKY

IG INDIGO

SF SEAFOAM

TR TERRACOTTA

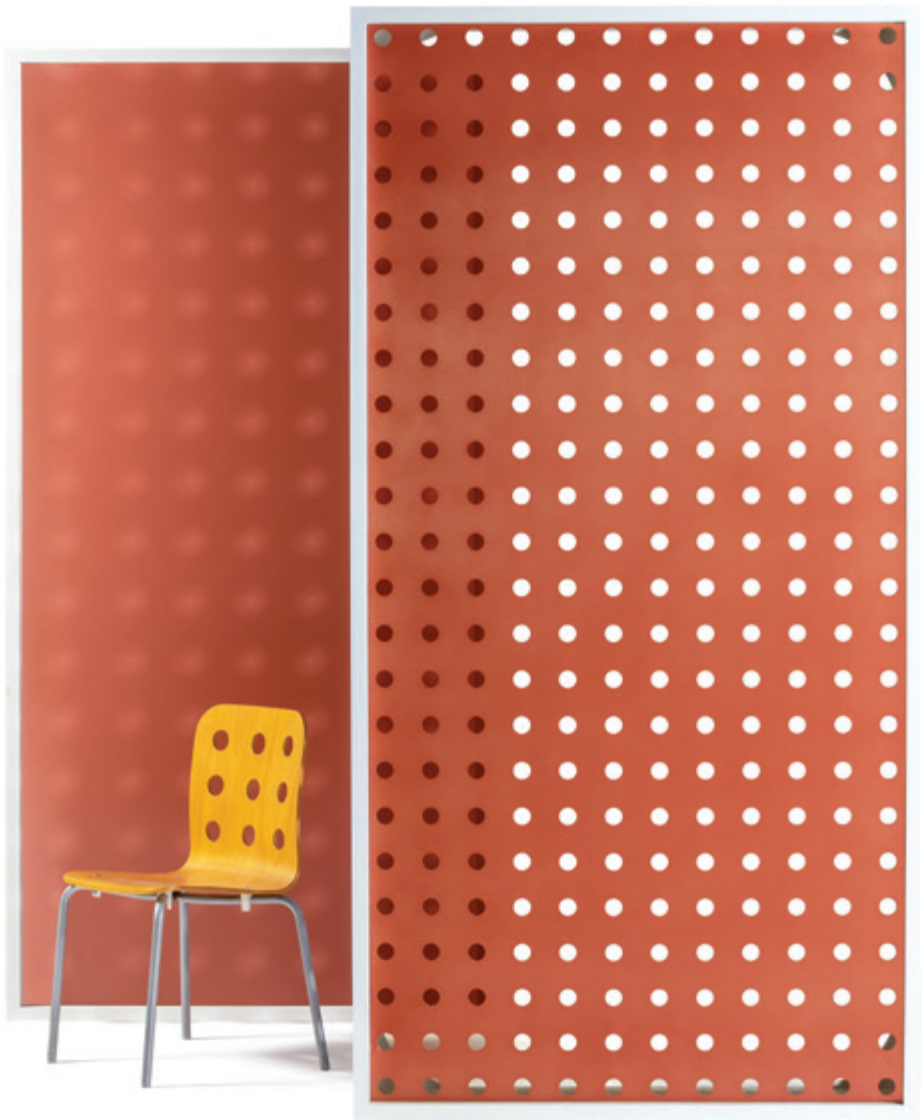
SA SAFFRON

AR ARCTIC

CR CHARCOAL

CB BRUSHED







**Specifications:**

Size: 96" x 48" | Thickness: .063" or .090"  
Weight (approx.): 25 lbs. (.063"), 40 lbs. (.090")

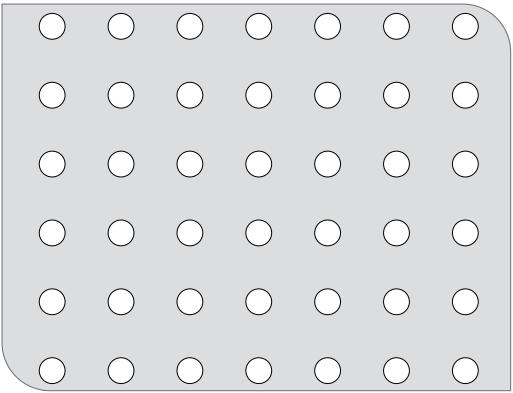
**Ordering:**

Specify pattern and color. Ex: 'Chemetal 573 SY'  
for #573 Connect with a Sky Blue powder coat.

**Customization:**

Standard patterns are a jumping off point for  
custom designs and sizes (4' x 8' or less).  
See more on "Your Metal Design Team" page.

**Pattern Detail:**



**Colorways:**



SY SKY

IG INDIGO

SF SEAFOAM

TR TERRACOTTA

SA SAFFRON

AR ARCTIC

CR CHARCOAL

CB BRUSHED

# #574

# Matrix

## Specifications:

Size: 96" x 48" | Thickness: .063" or .090"  
Weight (approx.): 25 lbs. (.063"), 40 lbs. (.090")

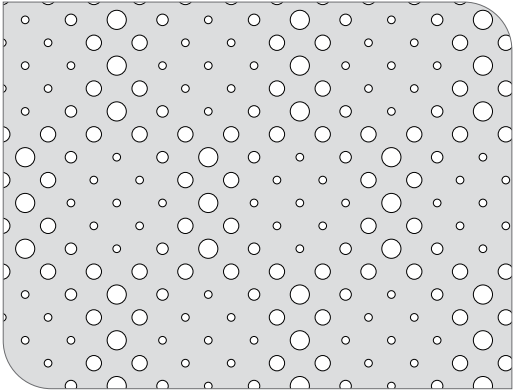
## Ordering:

Specify pattern and color. Ex: 'Chemetal 574 SY'  
for #574 Matrix with a Sky Blue powder coat.

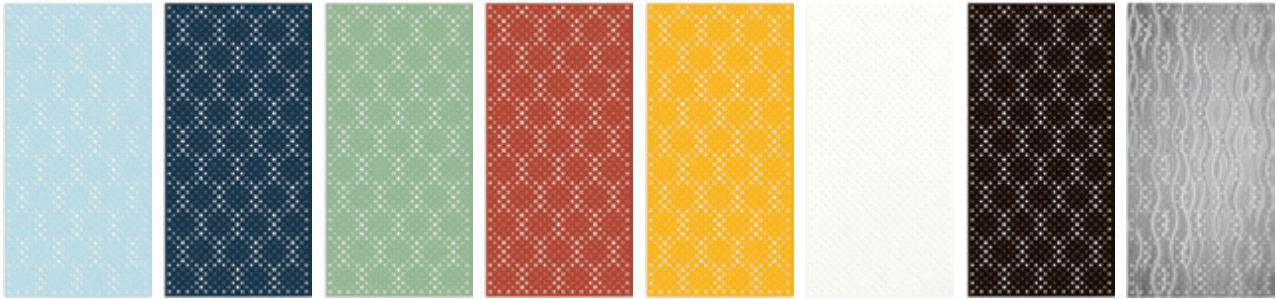
## Customization:

Standard patterns are a jumping off point for  
custom designs and sizes (4' x 8' or less).  
See more on "Your Metal Design Team" page.

## Pattern Detail:



## Colorways:



SY SKY

IG INDIGO

SF SEAFOAM

TR TERRACOTTA

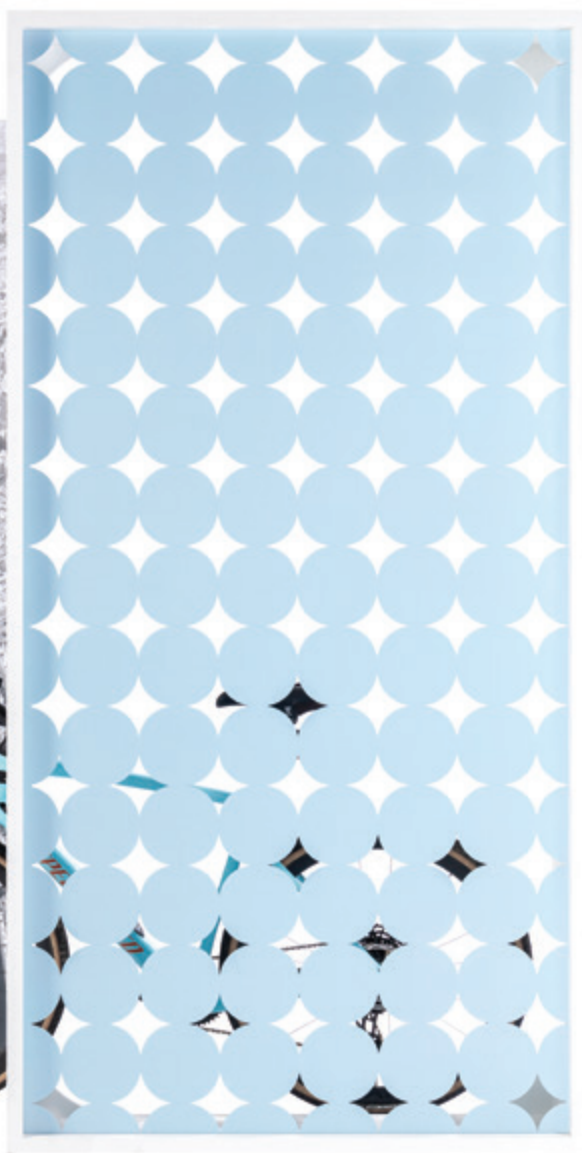
SA SAFFRON

AR ARCTIC

CR CHARCOAL

CB BRUSHED







# #575

# Imperial

**Specifications:**

Size: 96" x 48" | Thickness: .063" or .090"  
Weight (approx.): 25 lbs. (.063"), 40 lbs. (.090")

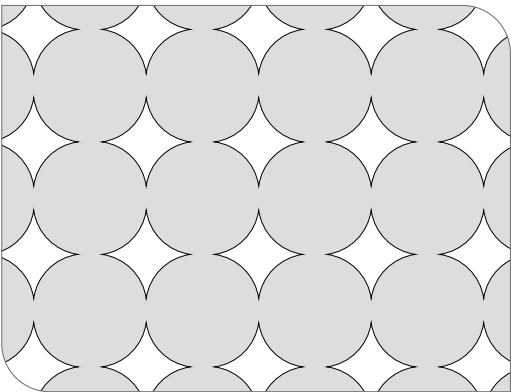
**Ordering:**

Specify pattern and color. Ex: 'Chemetal 575 SY'  
for #575 Imperial with a Sky Blue powder coat.

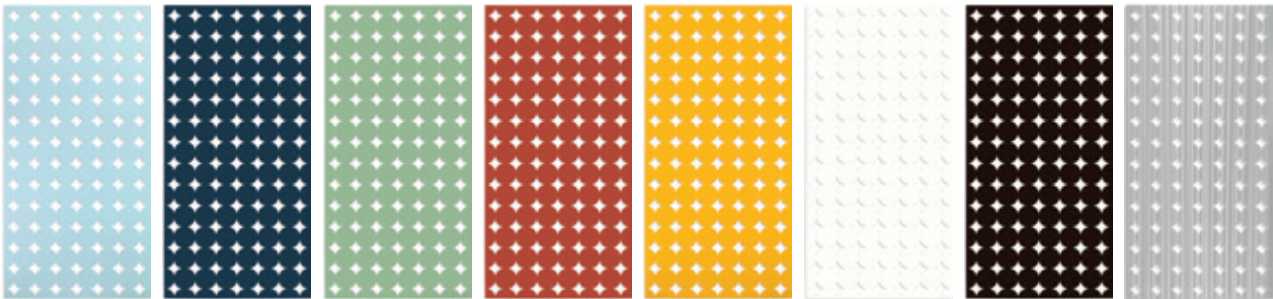
**Customization:**

Standard patterns are a jumping off point for  
custom designs and sizes (4' x 8' or less).  
See more on "Your Metal Design Team" page.

**Pattern Detail:**



**Colorways:**



SY SKY

IG INDIGO

SF SEAFOAM

TR TERRACOTTA

SA SAFFRON

AR ARCTIC

CR CHARCOAL

CB BRUSHED

SURFACE MODE: **TRANSPARENCY**



# #576

# Chevron

## Specifications:

Size: 96" x 48" | Thickness: .063" or .090"  
Weight (approx.): 25 lbs. (.063"), 40 lbs. (.090")

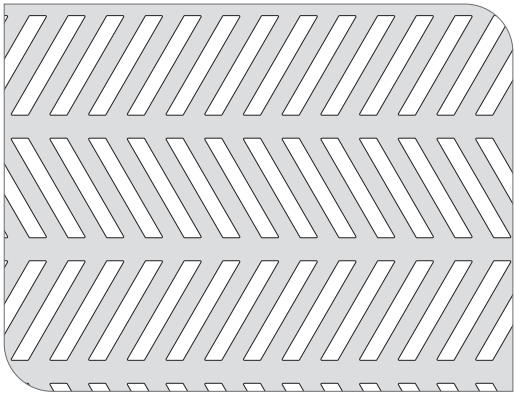
## Ordering:

Specify pattern and color. Ex: 'Chemetal 576 SY'  
for #576 Chevron with a Sky Blue powder coat.

## Customization:

Standard patterns are a jumping off point for  
custom designs and sizes (4' x 8' or less).  
See more on "Your Metal Design Team" page.

## Pattern Detail:



## Colorways:



**SY** SKY

**IG** INDIGO

**SF** SEAFOAM

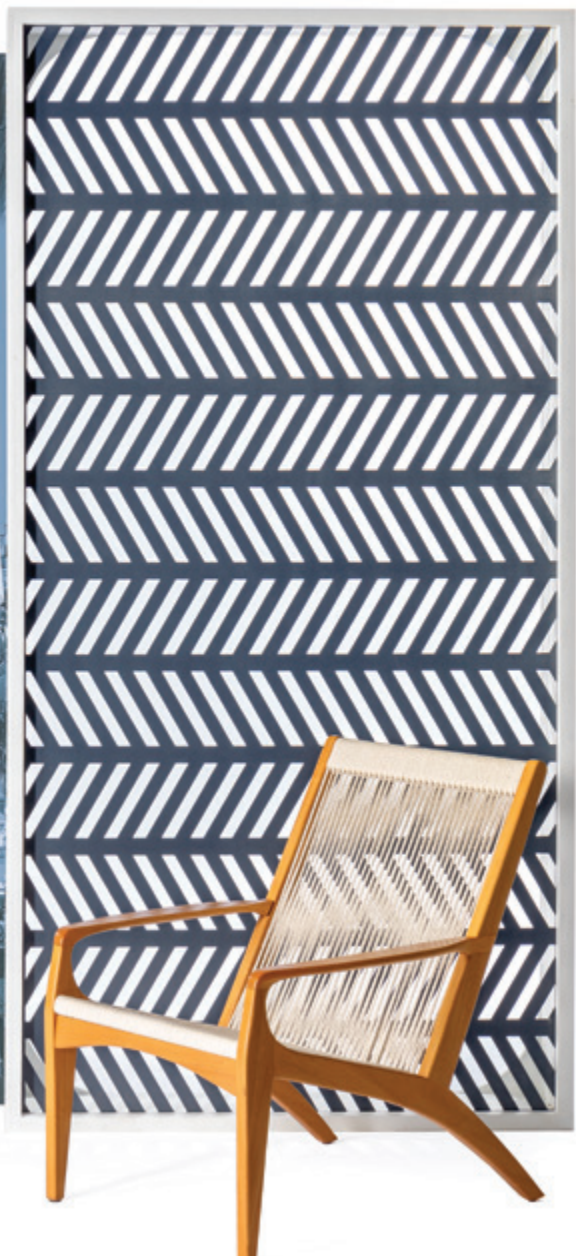
**TR** TERRACOTTA

**SA** SAFFRON

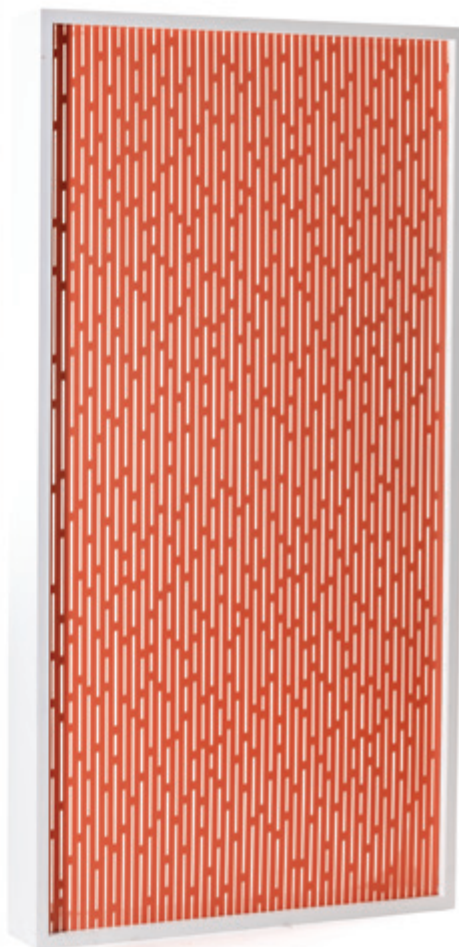
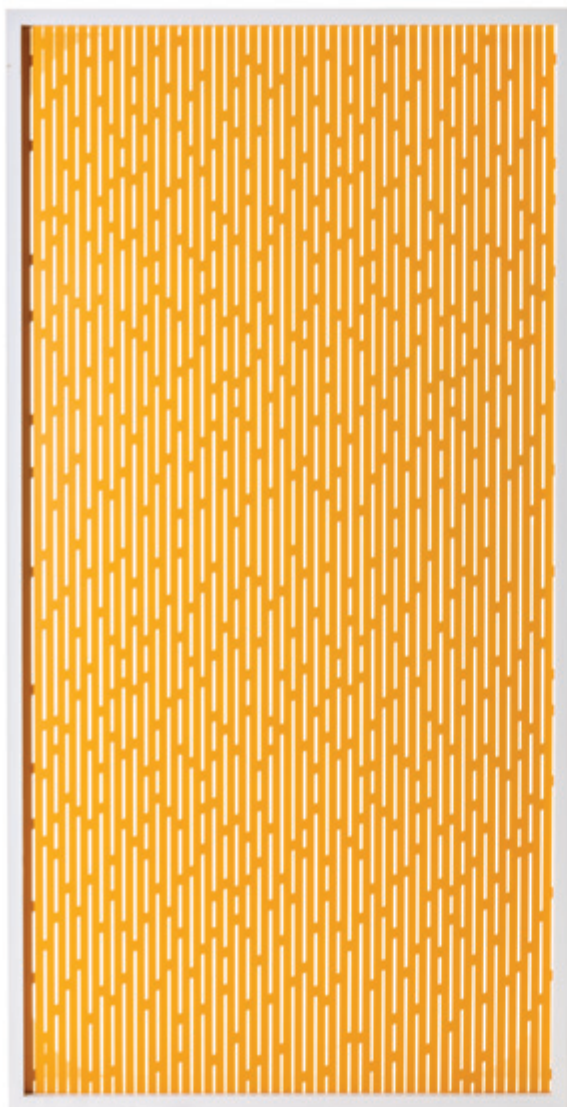
**AR** ARCTIC

**CR** CHARCOAL

**CB** BRUSHED







# #577

# Rain

## Specifications:

Size: 96" x 48" | Thickness: .063" or .090"  
Weight (approx.): 25 lbs. (.063"), 40 lbs. (.090")

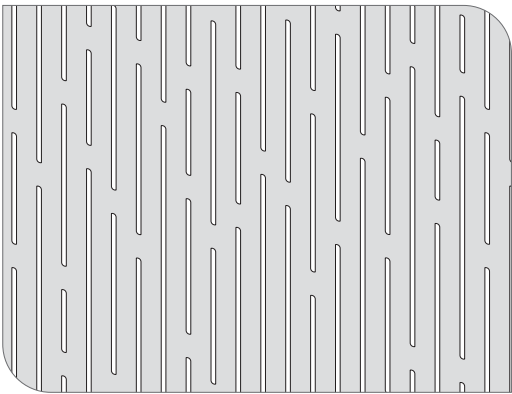
## Ordering:

Specify pattern and color. Ex: 'Chemetal 577 SY'  
for #577 Rain with a Sky Blue powder coat.

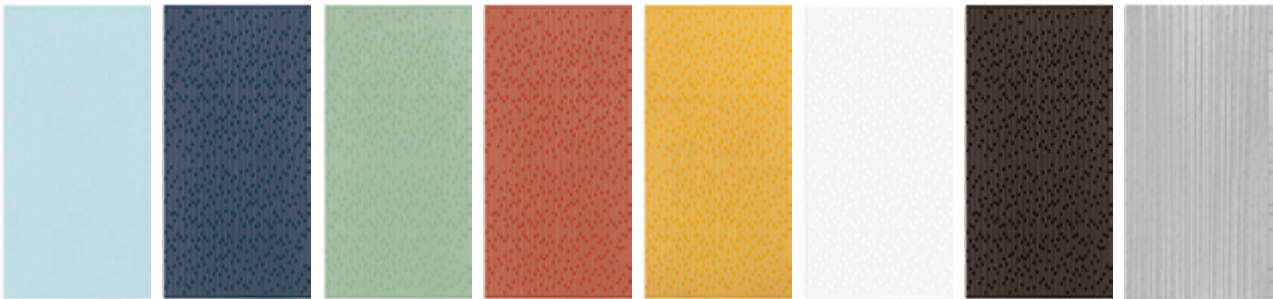
## Customization:

Standard patterns are a jumping off point for  
custom designs and sizes (4' x 8' or less).  
See more on "Your Metal Design Team" page.

## Pattern Detail:



## Colorways:



SY SKY

IG INDIGO

SF SEAFOAM

TR TERRACOTTA

SA SAFFRON

AR ARCTIC

CR CHARCOAL

CB BRUSHED

SURFACE MODE: **TRANSPARENCY**

**CHEMETAL**

# #578

# UFO

**Specifications:**

Size: 96" x 48" | Thickness: .063" or .090"  
Weight (approx.): 25 lbs. (.063"), 40 lbs. (.090")

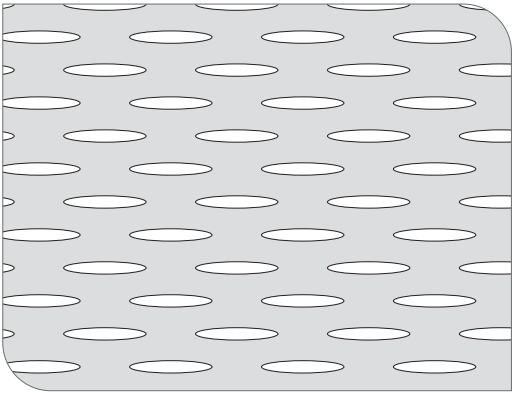
**Ordering:**

Specify pattern and color. Ex: 'Chemetal 578 SY'  
for #578 UFO with a Sky Blue powder coat.

**Customization:**

Standard patterns are a jumping off point for  
custom designs and sizes (4' x 8' or less).  
See more on "Your Metal Design Team" page.

**Pattern Detail:**



**Colorways:**



SY SKY

IG INDIGO

SF SEAFOAM

TR TERRACOTTA

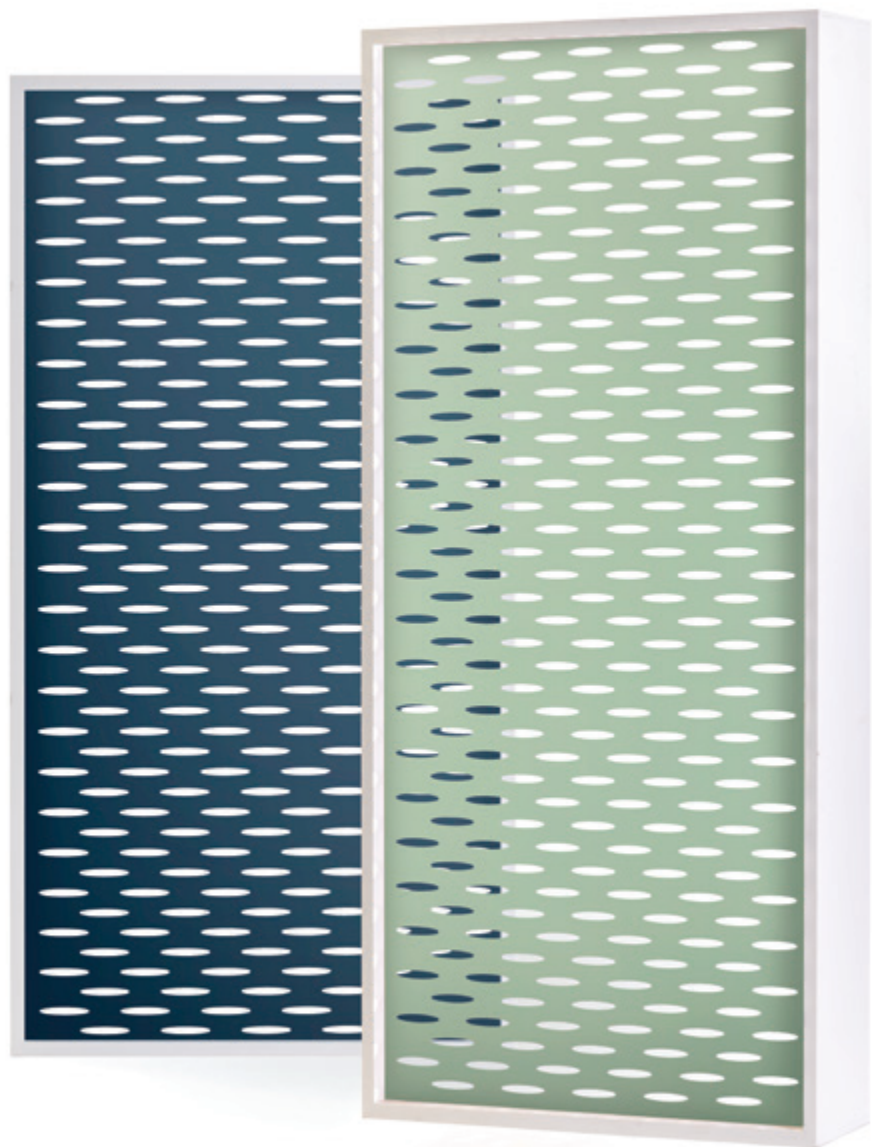
SA SAFFRON

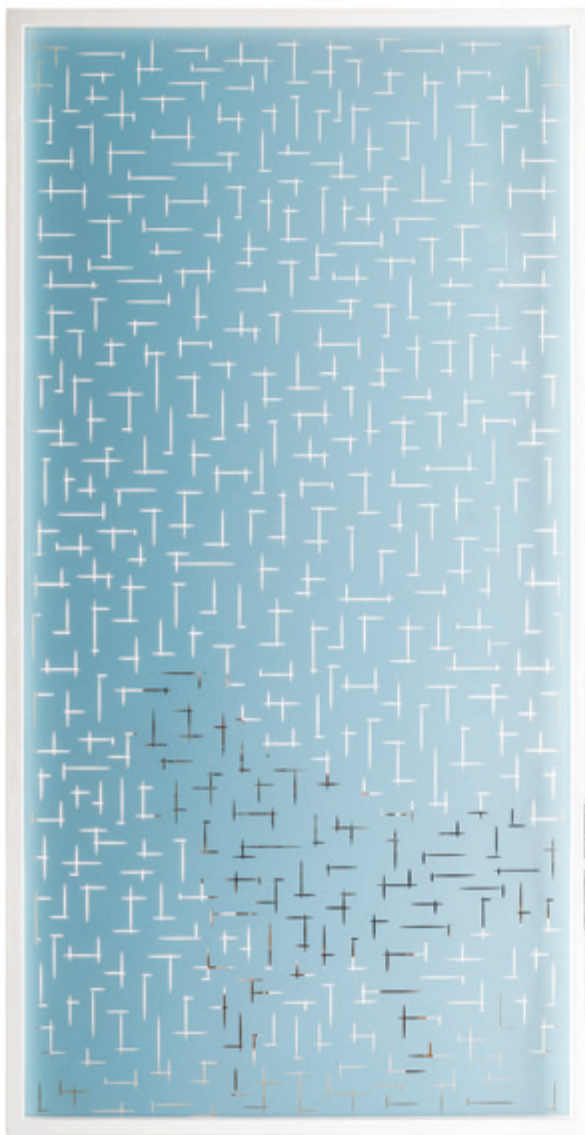
AR ARCTIC

CR CHARCOAL

CB BRUSHED







# #579

# Jetson

## Specifications:

Size: 96" x 48" | Thickness: .063" or .090"  
Weight (approx.): 25 lbs. (.063"), 40 lbs. (.090")

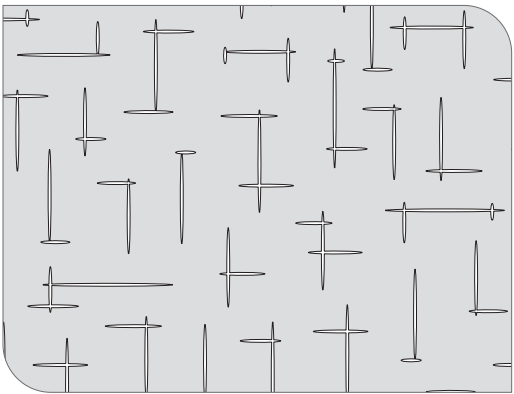
## Ordering:

Specify pattern and color. Ex: 'Chemetal 579 SY'  
for #579 Jetson with a Sky Blue powder coat.

## Customization:

Standard patterns are a jumping off point for  
custom designs and sizes (4' x 8' or less).  
See more on "Your Metal Design Team" page.

## Pattern Detail:



## Colorways:



SY SKY

IG INDIGO

SF SEAFOAM

TR TERRACOTTA

SA SAFFRON

AR ARCTIC

CR CHARCOAL

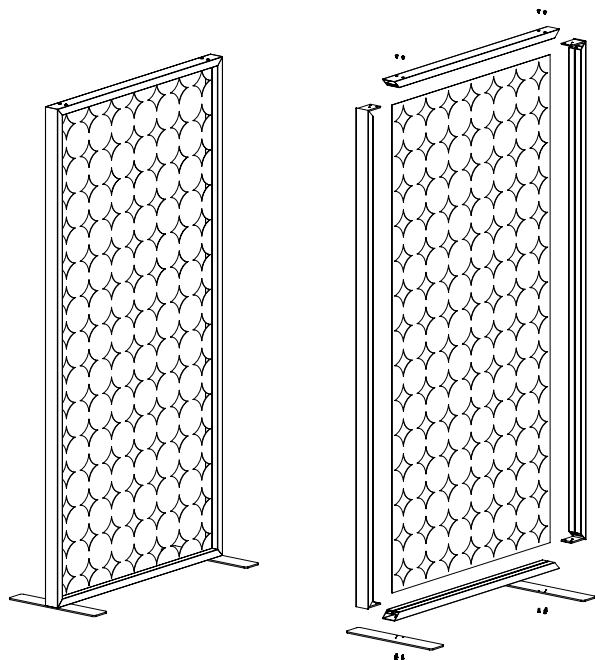
CB BRUSHED

SURFACE MODE: **TRANSPARENCY**

**CHEMETAL**







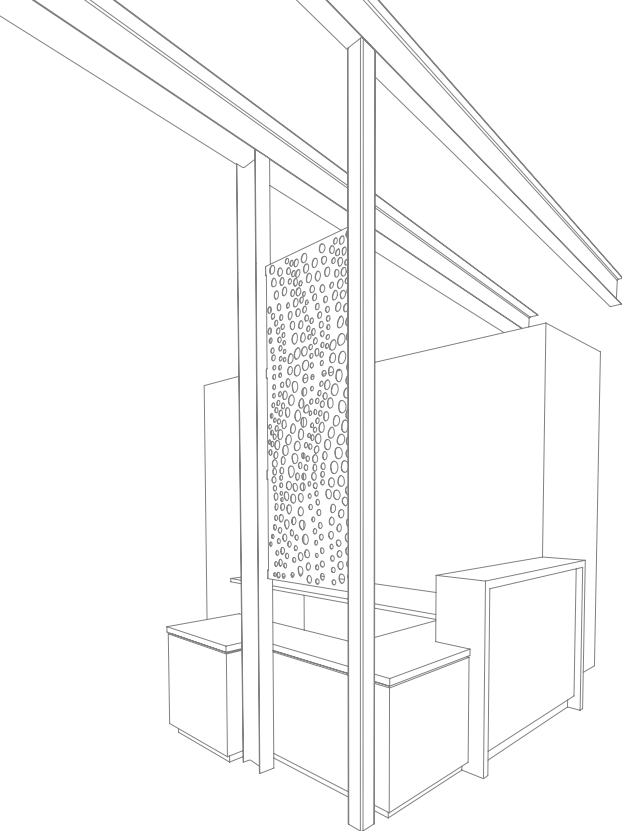
## Frame System

Transparency offers an optional frame system that fits panels up to 4' x 8' and is ideal as a freestanding room divider (with optional feet), hanging frame, half wall divider and more. Available as a frame system or frame lengths with assembly instructions. Cut-to-size and custom powder coat colors available.

### **Standard Specifications:**

Extruded Aluminum | White Powder Coat | Exterior Dimensions: 50" (w) x 98" (h)  
Frame Weight: 35 lbs. | Frame Profile: 1-1/2" (h) x 3" (w) | Slot Opening: 1/8"





## Your metal design team.

Chemetal can create custom pieces based on your renderings, including custom patterns, cut-to-size, brake forming and site-specific installation solutions. Transparency is ripe with opportunities for custom work. Whether starting from a rough sketch or finished design files, our expert team can take your project from idea to reality.

Look behind the scenes with a video showing how Chemetal can design custom pieces that work with existing architecture.





# Sustainability

Chemetal is dedicated to providing designers with sustainable materials and information about them. As part of the mindfulMATERIALS library, product transparency information from Chemetal is readily available in an organized format. Metal designs and laminates from Chemetal contribute to LEED in several areas and many are part of Red List Free, with HPDs (Health Product Declarations) available. In addition, Chemetal produces more than half of the energy used in its 70,000 sq ft manufacturing facility with a 1000 panel, 400 kW rooftop solar array.

## Let's crank some metal.

Chemetal creates beautiful, innovative metal designs and laminates for interior spaces. It's a second-generation family-owned company that has been in business for over 50 years. Chemetal makes many designs in house in USA, and is available worldwide through its distributor network. Learn more and order free samples at [chemetal.com](http://chemetal.com).



**CHEMETAL®**



**metal designs and laminates**

chemetal.com | 800 807-7341

**CHEMETAL®**

