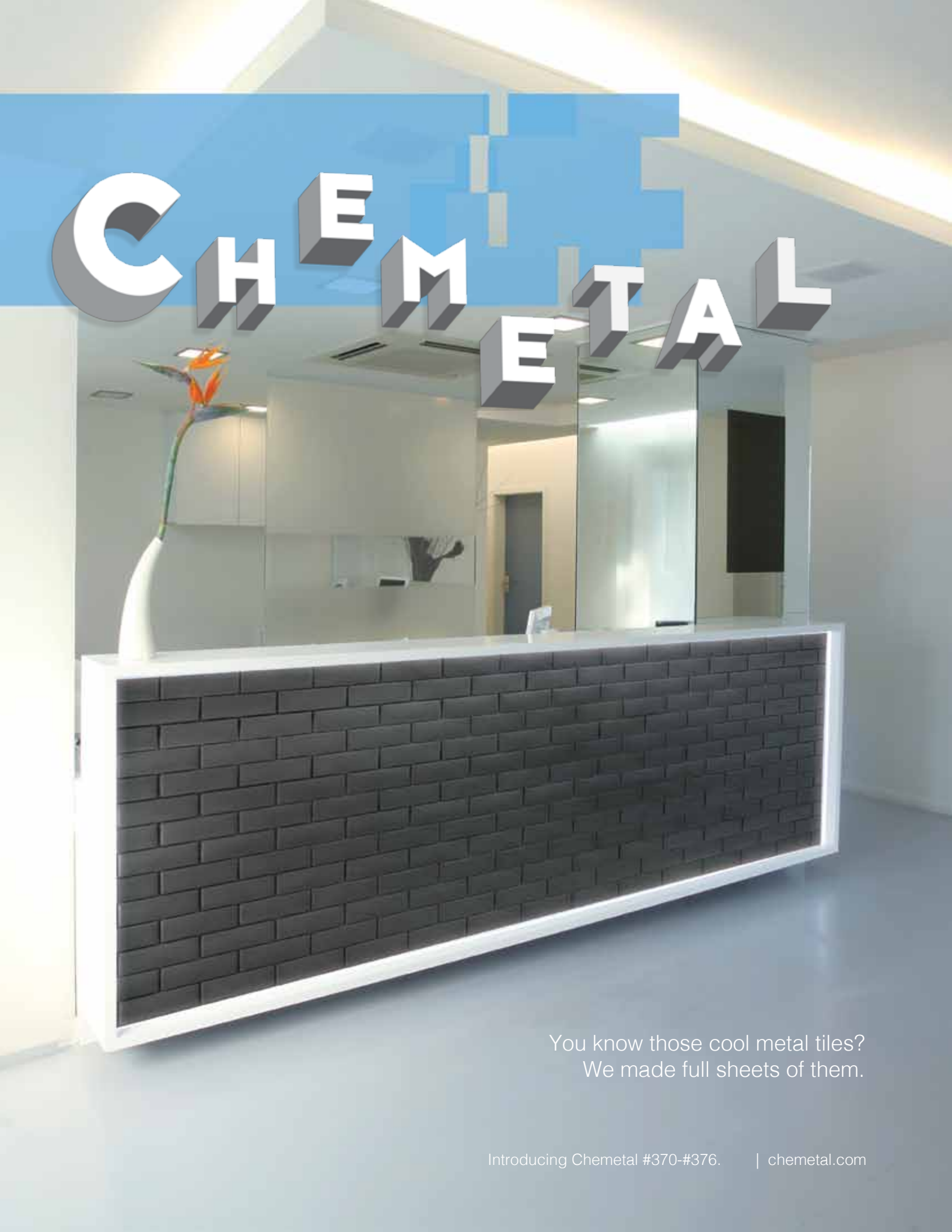
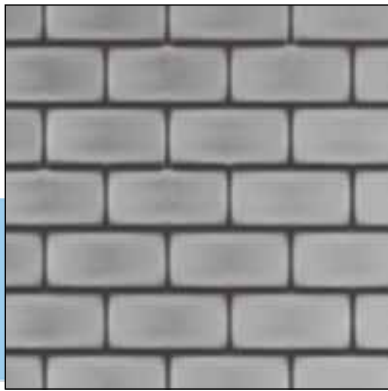


CHEMETAL

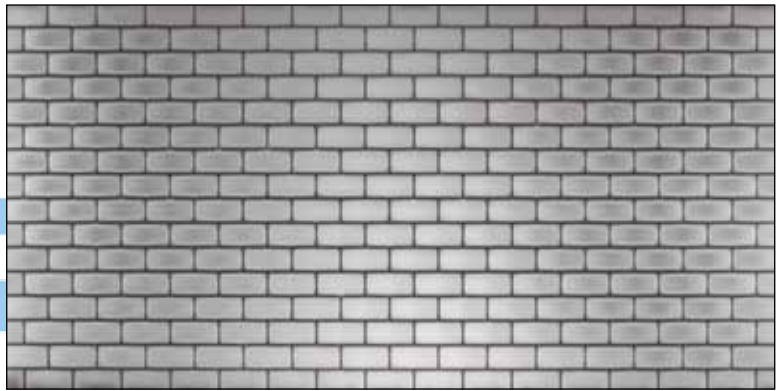


You know those cool metal tiles?
We made full sheets of them.

Introducing Chemetal #370-#376. | chemetal.com



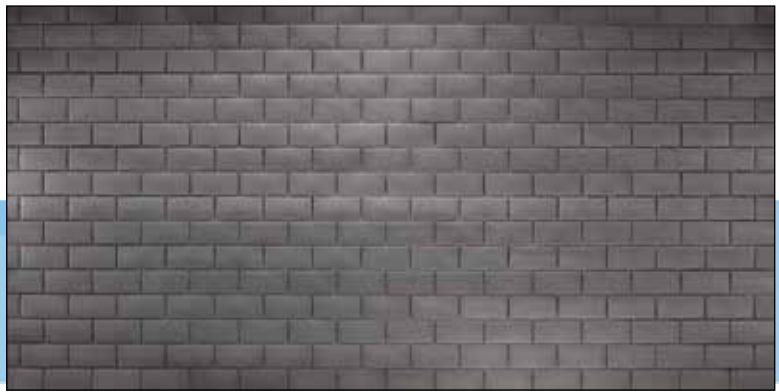
#370 3by6 Subway Shine



Sheet Size: 4' x 8'



#371 3by6 Subway Aged



Sheet Size: 4' x 8'



#372 3by6 Subway Dark



Sheet Size: 4' x 8'



#373 3by6 Grid Aged



Sheet Size: 4' x 8'



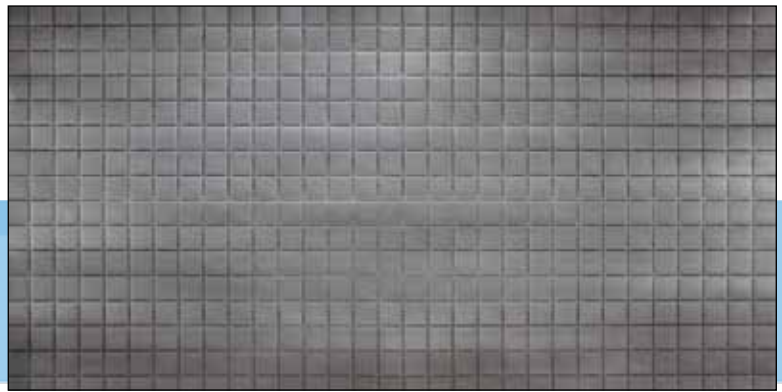
#374 3by6 Grid Dark



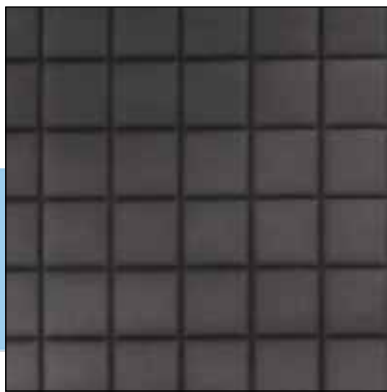
Sheet Size: 4' x 8'



#375 3by3 Aged



Sheet Size: 4' x 8'

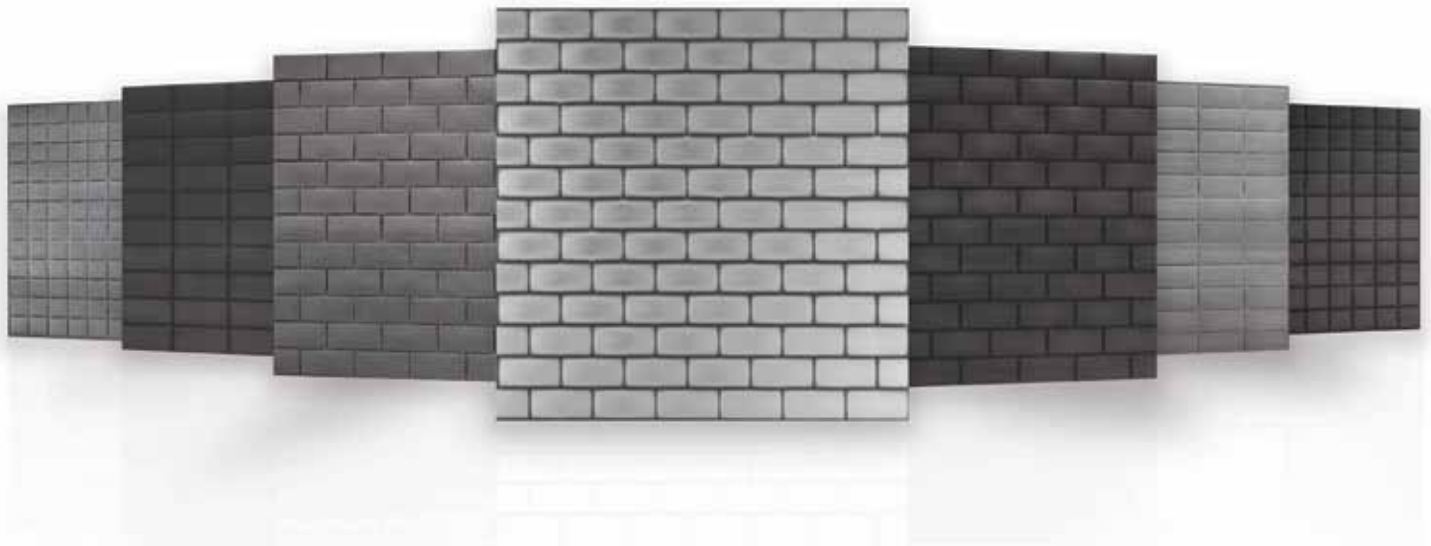


#376 3by3 Dark



Sheet Size: 4' x 8'

New Metal Tile Designs from Chemetal.



As part of our 2015 introduction, Chemetal has introduced 7 new metal tile designs. These designs offer the modern look of metal tiles in a grout free full sheet install. We patina these designs by hand and machine in our Easthampton, MA facility. Custom options are available, charges may apply. Contains recycled aluminum, may qualify for LEED.

Since these designs are larger in scale, they can't be accurately represented by smaller chip samples. Here, we've included closeup and full sheet images of the new designs. Samples are available in 8" x 10" sample size, please contact us to request the sample you want.

As seen in 4' x 8' sheet view, the pattern runs vertically on sheet. We are often promoting these sheets with pattern running horizontally, which we believe is the ideal orientation once installed. Because this design is created with a master plate, we cannot re-orient the pattern to run a different direction, except as a custom option.

These tile designs represent weathered tile designs and have natural imperfections in the surface and color variations that are an intended part of the design.

Chemetal #370-#376 Tech Info

Product Description: Solid Aluminum 4' x 8' sheets with embossed tile designs and aged appearance. Tiles represented on sheet are either 3" x 6" or 3" x 3", size is identified in product name. Ideal for vertical and light duty horizontal installation.

Product is offered as standard solid aluminum, low pressure laminate backer option. Because of the embossed design, laminate backer is affixed using contact adhesive.

Not for use in environments with direct heat, or in bathrooms or showers enclosures with direct water flow. For more complete technical info, please visit chemetal.com.

Size: 4' x 8' sheet

Weight: Approx. 10 LBS per sheet



(800) 807-7341 | sales@chemetal.com | chemetal.com