

The many moods of

M E T A L



chemetal.com

CHEMETAL®



Chemetal #427 Placid



Chemetal #812 Satin Smoked Chrome



Chemetal #504 Grasshopper



Chemetal #791 Natural Brushed Alum.



Chemetal #701 Polished Aluminum



Chemetal #354 Alu Dark



Chemetal #814 Satin Golden Bronze

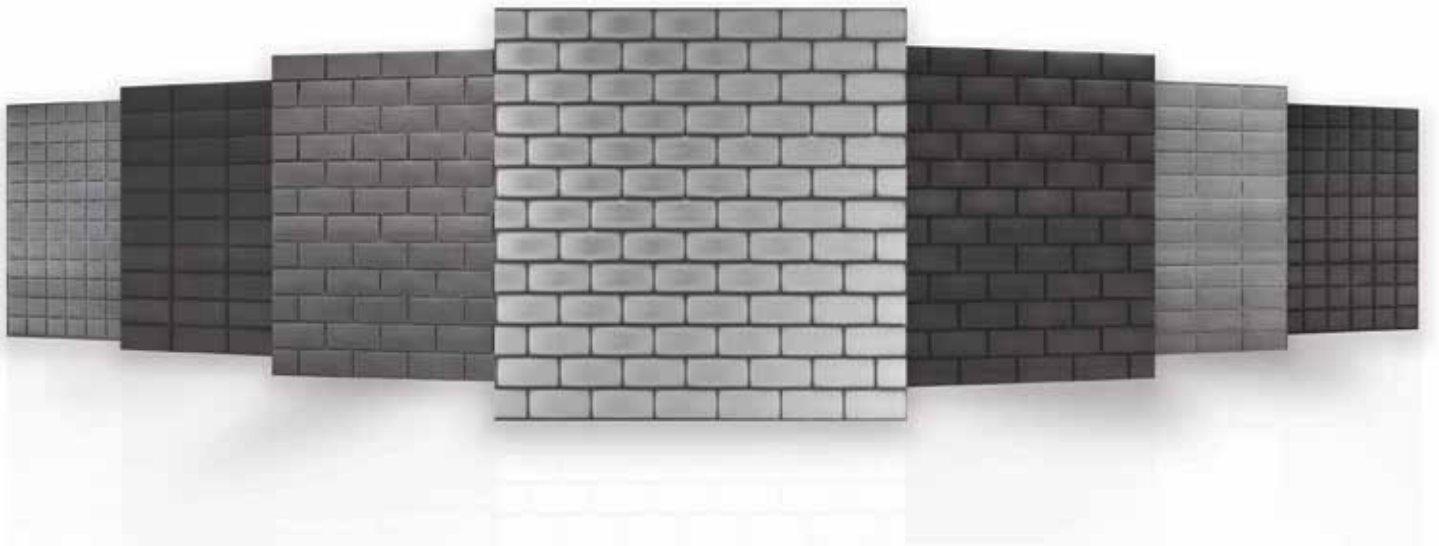
Let's Crank Some Metal.

Chemetal is a massive collection of metal and laminate designs. We make many of our materials; deeply brushing, aging and adding patinas by hand and machine. Our designs are unique works of art, created with a manufacturing consistency to ensure repeatability. We also source some of the best metal designs the world over. It adds up to what we consider the most expansive collection of metal designs for interiors that you'll find anywhere. We back it up with exceptional sales and customer service that cares about getting it right.





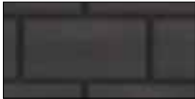
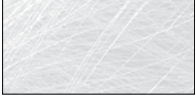

Chemetal is family-owned, and has been in business for over 50 years. Our materials are sold worldwide through our international distributor network. Contact us directly for the nearest distributor, or for samples of our metal designs and laminates. We look forward to working with you.

CHEMETAL

New Designs from Chemetal



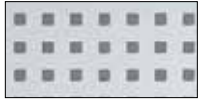
New for 2015 #370-#376 4' x 8' Tile Designs

| | | | | | |
|---|---|--|--|---|--|
| NEW  #231 Metawave | NEW  #232 Metawave Dark | NEW  #234 Starliner | NEW  #235 Bling | NEW  #337 Aged Brass | NEW  #338 Aged Brass Dark |
| NEW  #370 3x6 Subway Shine | NEW  #371 3x6 Subway Aged | NEW  #372 3x6 Subway Dark | NEW  #373 3x6 Grid Aged | NEW  #374 3x6 Grid Dark | NEW  #375 3x3 Aged |
| NEW  #376 3x3 Dark | NEW  #413-WW Linear Whitewash | NEW  #414-WW Nomadic Whitewash | NEW  #427-WW Placid Whitewash | NEW  #605 Wander Aluminum | NEW  #606 Blackened Aluminum |
| NEW  #607 Core Aluminum | NEW  #608 Gotham Aluminum | NEW  #609 Gilt Aluminum | NEW  #610 Khaleesi Aluminum | NEW  #712 Brushed Stainless Steel | NEW  #931 Brushed Golden Alum. |

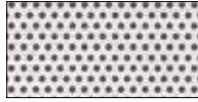
#370-#376 4' x 8' Tile Designs are vertical patterns, shown here horizontally. Visit chemetal.com for larger and full sheet views of most Chemetal designs.

Chemetal Designs

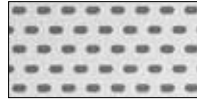
100 Series



#101
Windows



#102
Micro Steel

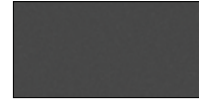


#103
Grille

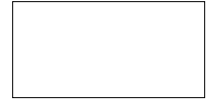
Magnetic Laminates



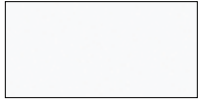
#150
HPL Magnetic Board



#151
Black Magnetic Chalkboard



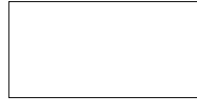
#152
White Gloss Magnetic Dry Erase



#153
White Satin Magnetic

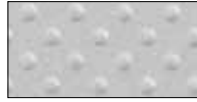


#157
Lime Gloss Magnetic Dry Erase



#160
White Gloss Magnetic Dry Erase Steel

200 Series



#213
Lunaria



#214
Diamondback



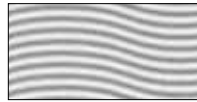
#216
Footplate



#217
Reptilian



#218
Cobblestone



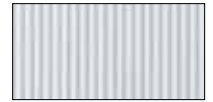
#220
Venetian Wave



#221
Argenta



#223
Chromium



#226
Venetian Vertical



#227
Venetian Horizontal



#230
Moonscape



#238
Autumn Leaves



#244
Pewter Wave



#251
Sonoma



#253
Metropolis



#260
Champagne Leaf



#262
Red Rock



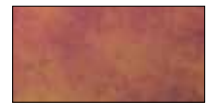
#264
Pewter Vines



#273
Venetian Stainless Alum.



#310
Antiqued Brushed



#313
Renaissance

300 Series



#314
Mayan



#315
Canterbury



#317
Aurora



#318
Essex



#325
Statuary



#333
Franklin



#340
Monet



#343
Meteor



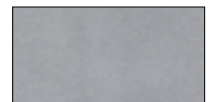
#346
Graphite



#349
Factory



#350
Factory Dark



#352
Alu Light

400 & 500 Series



#353
Alu Medium



#354
Alu Dark



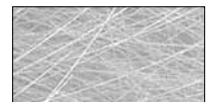
#355
Lineup



#406
Circles



#413
Linear



#414
Nomadic



#417
Nomadic Antiqued



#420
Cascade



#423
Swirled Copper



#427
Placid



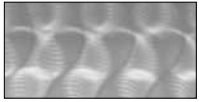
#440
Crescendo



#443
Plume

Chemetal Designs

400 & 500 Series



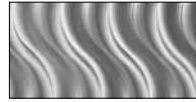
#444
Feathered Aluminum



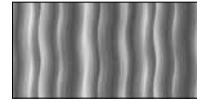
#449
Ripple



#450
Cyclone



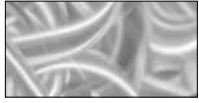
#451
Serpentine



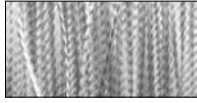
#452
Ribbon



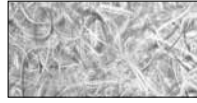
#454
Fireworks



#501
Noodle Bar



#504
Grasshopper



#505
Butterfly Effect

600 Series



#600
Weathered Alum.



#601
Deep Bronze Alum.

700 Series



#701
Polished Alum.



#702
Brushed Alum.



#703
Polished Brass Alum.



#704
Brushed Light Brass Alum.



#706
Satin Copper



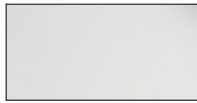
#710
Stainless Steel



#711
Ambient Stainless Steel



#712
Brushed Stainless Steel



#719
Satin Silver Alum.



#720
Brushed Smoked Alum.



#721
Oiled Brushed
Bronze Alum.



#727
Light Stainless Steel Alum.



#791
Natural Brushed Alum.

800 Series



#796
Stainless Steel Alum.



#801
Polished Chrome



#802
Satin Chrome



#803
Polished Solid Brass



#804
Satin Solid Brass

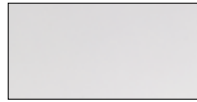


#812
Satin Smoked Chrome

900 Series



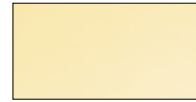
#814
Satin Golden Bronze



#901
Polished Alum.



#902
Brushed Alum.



#903
Polished Brass Alum.



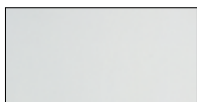
#904
Brushed Light
Brass Alum.



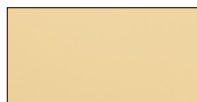
#906
Brushed Copper Alum.



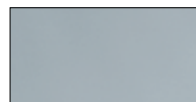
#908
Satin Black Alum.



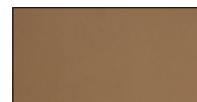
#909
Satin Silver Alum.



#910
Satin Gold Alum.



#911
Polished Smoked Alum.



#912
Satin Bronze Alum.



#914
Cross Hatch Alum.



#915
Brushed Brass Alum.



#916
Brushed Pewter Alum.



#917
Brushed Black Alum.



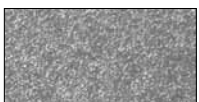
#924
Bronze Stainless
Steel Alum.



#925
Brushed Medium
Bronze Alum.



#927
Light Stainless
Steel Alum.



#928
Clear Ambient Alum.



#929
Stainless Ambient Alum.

Chemetal Product Reference

| | | | Thickness | | | |
|------------------------------------|-------------------|---------------|-----------|----------|-------|-----------------|
| 100 Series | Sheet Size | Base Metal | HPL | Phenolic | Metal | Weight sq ft |
| 101 Windows Aluminum | 4' x 8' | Aluminum | | | 0.025 | .30 lb / sq ft |
| 102 Micro-Steel Aluminum | 4' x 8' | Aluminum | | | 0.025 | .30 lb / sq ft |
| 103 Grille Aluminum | 4' x 8' | Aluminum | | | 0.025 | .30 lb / sq ft |
| Magnetic and Dry Erase | Sheet Size | Base Metal | HPL | Phenolic | Metal | Weight sq ft |
| 150 HPL Magnetic Board | 4' x 8' | Iron/Melamine | 0.033 | | | .58 lb / sq ft |
| 151 Black Magnetic Chalkboard | 4' x 8' | Iron/Melamine | 0.033 | | | .58 lb / sq ft |
| 152 White Gloss Magnetic Dry Erase | 4' x 8', 4' x 10' | Iron/Melamine | 0.043 | | | .58 lb / sq ft |
| 153 White Satin Magnetic | 4' x 8' | Iron/Melamine | 0.043 | | | .58 lb / sq ft |
| 157 Lime Gloss Magnetic Dry Erase | 4' x 8' | Iron/Melamine | 0.043 | | | .58 lb / sq ft |
| 160 White Gloss Magnetic Dry Erase | 4' x 8', 4' x 10' | Steel | | 0.05 | 0.023 | .94 lb / sq ft |
| 200 Series | Sheet Size | Base Metal | HPL | Phenolic | Metal | Weight sq ft |
| 213 Lunaria | 4' x 8' | Aluminum | 0.055 | | | .42 lb / sq ft |
| 214 Diamondback | 4' x 8' | Aluminum | 0.055 | | | .42 lb / sq ft |
| 216 Footplate | 4' x 8' | Aluminum | 0.055 | | | .42 lb / sq ft |
| 217 Reptilian | 4' x 8' | Copper | 0.055 | | | .42 lb / sq ft |
| 218 Cobblestone | 4' x 8' | Copper | 0.055 | | | .42 lb / sq ft |
| 220 Venetian Wave | 4' x 8' | Aluminum | 0.055 | | | .42 lb / sq ft |
| 221 Argenta | 4' x 8' | Aluminum | 0.055 | | | .42 lb / sq ft |
| 223 Chromium | 4' x 8' | Aluminum | 0.055 | | | .42 lb / sq ft |
| 226 Venetian Vertical | 4' x 8' | Aluminum | 0.055 | | | .42 lb / sq ft |
| 227 Venetian Horizontal | 4' x 8' | Aluminum | 0.055 | | | .42 lb / sq ft |
| 230 Mooncape | 4' x 8' | Copper | 0.055 | | | .42 lb / sq ft |
| 231 Metawave | 4' x 8' | Aluminum | 0.055 | | | .42 lb / sq ft |
| 232 Metawave Dark | 4' x 8' | Aluminum | 0.055 | | | .42 lb / sq ft |
| 234 Starliner | 4' x 8' | Aluminum | 0.055 | | | .42 lb / sq ft |
| 235 Bling | 4' x 8' | Aluminum | 0.055 | | | .42 lb / sq ft |
| 238 Autumn Leaves | 4' x 8' | Copper | 0.055 | | | .42 lb / sq ft |
| 244 Pewter Wave | 4' x 8' | Aluminum | 0.055 | | | .42 lb / sq ft |
| 251 Sonoma | 4' x 8' | Copper | 0.055 | | | .42 lb / sq ft |
| 253 Metropolis | 4' x 8' | Aluminum | 0.055 | | | .42 lb / sq ft |
| 260 Champagne Leaf | 4' x 8' | Aluminum | 0.055 | | | .42 lb / sq ft |
| 262 Red Rock | 4' x 8' | Copper | 0.055 | | | .42 lb / sq ft |
| 264 Pewter Vines | 4' x 8' | Aluminum | 0.055 | | | .42 lb / sq ft |
| 273 Venetian Stainless Aluminum | 4' x 8' | Aluminum | 0.055 | | | .42 lb / sq ft |
| 300 Series | Sheet Size | Base Metal | HPL | Phenolic | Metal | Weight sq ft |
| 310 Antiqued Brushed | 2' x 8', 2' x 10' | Brass | | 0.044 | 0.016 | .706 lb / sq ft |
| 313 Renaissance | 4' x 8', 4' x 10' | Copper | 0.043 | | | .344 lb / sq ft |
| 314 Mayan | 4' x 8', 4' x 10' | Copper | 0.043 | | | .344 lb / sq ft |
| 315 Canterbury | 4' x 8', 4' x 10' | Copper | 0.043 | | | .344 lb / sq ft |
| 317 Aurora | 4' x 8', 4' x 10' | Copper | 0.043 | | | .344 lb / sq ft |
| 318 Essex | 4' x 8', 4' x 10' | Copper | 0.043 | | | .344 lb / sq ft |
| 325 Statuary | 2' x 8', 2' x 10' | Brass | | 0.044 | 0.016 | .706 lb / sq ft |
| 333 Franklin | 4' x 8', 4' x 10' | Aluminum | | 0.05 | 0.020 | .284 lb / sq ft |
| 337 Aged Brass | 2' x 8', 2' x 10' | Brass | | 0.044 | 0.016 | .706 lb / sq ft |
| 338 Aged Brass Dark | 2' x 8', 2' x 10' | Brass | | 0.044 | 0.016 | .706 lb / sq ft |
| 340 Monet | 4' x 8', 4' x 10' | Copper | 0.043 | | | .344 lb / sq ft |
| 343 Meteor | 4' x 8' | Copper | 0.043 | | | .344 lb / sq ft |
| 346 Graphite | 4' x 8' | Aluminum | | 0.05 | 0.020 | .284 lb / sq ft |
| 349 Factory | 4' x 8' | Aluminum | | 0.05 | 0.020 | .284 lb / sq ft |
| 350 Factory Dark | 4' x 8' | Aluminum | | 0.05 | 0.020 | .284 lb / sq ft |
| 352 Alu Lite | 4' x 8', 4' x 10' | Aluminum | | 0.05 | 0.020 | .284 lb / sq ft |
| 353 Alu Medium | 4' x 8', 4' x 10' | Aluminum | | 0.05 | 0.020 | .284 lb / sq ft |
| 354 Alu Dark | 4' x 8', 4' x 10' | Aluminum | | 0.05 | 0.020 | .284 lb / sq ft |
| 355 Lineup | 4' x 8' | Copper | 0.043 | | | .344 lb / sq ft |
| 370 3by6 Subway Shine | 4' x 8' | Aluminum | | 0.05 | 0.020 | .284 lb / sq ft |
| 371 3by6 Subway Aged | 4' x 8' | Aluminum | | 0.05 | 0.020 | .284 lb / sq ft |
| 372 3by6 Subway Dark | 4' x 8' | Aluminum | | 0.05 | 0.020 | .284 lb / sq ft |
| 373 3by6 Grid Aged | 4' x 8' | Aluminum | | 0.05 | 0.020 | .284 lb / sq ft |
| 374 3by6 Grid Dark | 4' x 8' | Aluminum | | 0.05 | 0.020 | .284 lb / sq ft |
| 375 3by3 Aged | 4' x 8' | Aluminum | | 0.05 | 0.020 | .284 lb / sq ft |
| 376 3by3 Dark | 4' x 8' | Aluminum | | 0.05 | 0.020 | .284 lb / sq ft |
| 400 Series | Sheet Size | Base Metal | HPL | Phenolic | Metal | Weight sq ft |
| 406 Circles | 4' x 8' | Aluminum | | 0.05 | 0.020 | .284 lb / sq ft |
| 413 Linear (tints available) | 4' x 8', 4' x 10' | Aluminum | | 0.05 | 0.020 | .284 lb / sq ft |
| 413-WW Linear Whitewash | 4' x 8', 4' x 10' | Aluminum | | 0.05 | 0.020 | .284 lb / sq ft |
| 414 Nomadic (tints available) | 4' x 8', 4' x 10' | Aluminum | | 0.05 | 0.020 | .284 lb / sq ft |
| 414-WW Nomadic Whitewash | 4' x 8', 4' x 10' | Aluminum | | 0.05 | 0.020 | .284 lb / sq ft |

Weights shown reflect standard way material is stocked.

CHEMETAL TECHNICAL DATA

Below please find an abbreviated version of our technical data. More complete info is viewable and downloadable at chemetal.com.

USE:

Chemetal metal designs and laminates are recommended for interior use on vertical and light-duty horizontal surfaces. Please contact Chemetal if you are uncertain about the use of our Chemetal in any application. Caution should be taken on surfaces that may be exposed to harsh chemicals, acidic beverages (alcoholic, colas, etc.) without cleaning the surface for lengthy periods of time.

STORAGE:

Store flat, not on edge. The laminates should be stored face-up in a cool, dry area and in a completely supported flat position. Use a top sheet of chipboard or similar material to hold stored sheets flat. Protect material from twist, rack and edge damage.

HANDLING:

Many Chemetal designs are solid aluminum and may distort or kink if handled incorrectly. To prevent surface distortion, large sheets should be handled by two people and transported face up. Additionally, please view our "How to Handle Chemetal" video at chemetal.com under Downloads>Videos.

PROTECTIVE MASK:

Although Chemetal is supplied with a protective mask, care should be taken when handling. Exposure of masked sheets to light or heat for long periods of time may cause problems with the removal of the protective mask. It is recommended to leave this mask on the surface of the laminates during processing work. Additionally, masking tape, for extra protection in routing work, may be applied over the protective mask. Color uniformity and other quality checks should be carried out on the sheets beforehand by lifting up the edge of the mask and laying it back down.

CLEANING AND MAINTENANCE:

Clean with a soft cloth using mild soap and water or nonabrasive glass and metal cleaning liquids. Do not use ammonia, abrasive cleaners or pads, or harsh solvents.

SHIPPING:

Many Chemetal designs may be rolled for shipping. However magnetic laminates (150 Series and #160 and solid aluminum and metal sheets (including solid aluminum 100, 300, 400, 500, 600, 800 and 900 Series) cannot be rolled, even with low pressure laminate backer applied. One exception: 24" wide brass designs (800 Series) may be rolled with low pressure laminate backer. 300 Series brass and copper based sheets may be rolled - #310, #325, #337 and #338 must have low pressure laminate backer.

Chemetal Product Reference

| | | | | | | |
|--|-------------------|-------------------|------------|-----------------|--------------|---------------------|
| 417 Nomadic Antiqued | 4' x 8', 4' x 10' | Aluminum | | 0.055 | 0.025 | .359 lb / sq ft |
| 420 Cascade (tints available) | 4' x 8', 4' x 10' | Aluminum | | 0.05 | 0.020 | .284 lb / sq ft |
| 423 Swirled Copper | 2' x 8', 2' x 10' | Copper | | 0.042 | 0.016 | .756 lb / sq ft |
| 427 Placid (tints available) | 4' x 8', 4' x 10' | Aluminum | | 0.05 | 0.020 | .284 lb / sq ft |
| 427-WW Placid Aluminum Whitewash | 4' x 8', 4' x 10' | Aluminum | | 0.05 | 0.020 | .284 lb / sq ft |
| 440 Crescendo (tints available) | 4' x 8', 4' x 10' | Aluminum | | 0.05 | 0.020 | .284 lb / sq ft |
| 443 Plume | 4' x 8', 4' x 10' | Aluminum | | 0.05 | 0.020 | .284 lb / sq ft |
| 444 Feathered | 4' x 8', 4' x 10' | Aluminum | | 0.05 | 0.020 | .284 lb / sq ft |
| 449 Ripple | 4' x 8' | Aluminum | | 0.05 | 0.020 | .284 lb / sq ft |
| 450 Cyclone | 4' x 8' | Aluminum | | 0.05 | 0.020 | .284 lb / sq ft |
| 451 Serpentine | 4' x 8' | Aluminum | | 0.05 | 0.020 | .284 lb / sq ft |
| 452 Ribbon | 4' x 8' | Aluminum | | 0.05 | 0.020 | .284 lb / sq ft |
| 454 Fireworks | 4' x 8' | Aluminum | | 0.05 | 0.020 | .284 lb / sq ft |
| 500 Series | Sheet Size | Base Metal | HPL | Phenolic | Metal | Weight sq ft |
| 501 Noodle Bar (tints available) | 4' x 8', 4' x 10' | Aluminum | | 0.05 | 0.020 | .284 lb / sq ft |
| 504 Grasshopper (tints available) | 4' x 8', 4' x 10' | Aluminum | | 0.05 | 0.020 | .284 lb / sq ft |
| 505 Butterfly Effect (tints available) | 4' x 8', 4' x 10' | Aluminum | | 0.05 | 0.020 | .284 lb / sq ft |
| 600 Series | Sheet Size | Base Metal | HPL | Phenolic | Metal | Weight sq ft |
| 600 Weathered Aluminum | 4' x 8' | Aluminum | | 0.055 | 0.025 | .359 lb / sq ft |
| 601 Deep Bronze Aluminum | 4' x 8' | Aluminum | | 0.055 | 0.025 | .359 lb / sq ft |
| 605 Wander Aluminum | 4' x 8' | Aluminum | | 0.055 | 0.025 | .359 lb / sq ft |
| 606 Blackened Aluminum | 4' x 8' | Aluminum | | 0.055 | 0.025 | .359 lb / sq ft |
| 607 Core Aluminum | 4' x 8' | Aluminum | | 0.055 | 0.025 | .359 lb / sq ft |
| 608 Gotham Aluminum | 4' x 8' | Aluminum | | 0.055 | 0.025 | .359 lb / sq ft |
| 609 Gilt Aluminum | 4' x 8' | Aluminum | | 0.055 | 0.025 | .359 lb / sq ft |
| 610 Khaleesi Aluminum | 4' x 8' | Aluminum | | 0.055 | 0.025 | .359 lb / sq ft |
| 700 Series | Sheet Size | Base Metal | HPL | Phenolic | Metal | Weight sq ft |
| 701 Polished Aluminum | 4' x 8', 4' x 10' | Aluminum | 0.038 | | | .316 lb / sq ft |
| 702 Brushed Aluminum | 4' x 8', 4' x 10' | Aluminum | 0.032 | | | .316 lb / sq ft |
| 703 Polished Brass Aluminum | 4' x 8', 4' x 10' | Aluminum | 0.038 | | | .316 lb / sq ft |
| 704 Brushed Light Brass Aluminum | 4' x 8', 4' x 10' | Aluminum | 0.032 | | | .316 lb / sq ft |
| 706 Satin Copper | 4' x 8', 4' x 10' | Copper | 0.032 | | | .316 lb / sq ft |
| 710 Stainless Steel | 96" x 40" | Steel | 0.032 | | | .316 lb / sq ft |
| 711 Ambient Stainless Steel | 4' x 8' | Steel | 0.032 | | | .316 lb / sq ft |
| 712 Brushed Stainless Steel | 4' x 8' | Steel | 0.032 | | | .316 lb / sq ft |
| 719 Satin Silver Aluminum | 4' x 8', 4' x 10' | Aluminum | 0.032 | | | .316 lb / sq ft |
| 720 Brushed Smoked Aluminum | 4' x 8', 4' x 10' | Aluminum | 0.032 | | | .316 lb / sq ft |
| 721 Oiled Bronze Aluminum | 4' x 8', 4' x 10' | Aluminum | 0.032 | | | .316 lb / sq ft |
| 727 Light Stainless Steel Aluminum | 4' x 8', 4' x 10' | Aluminum | 0.032 | | | .316 lb / sq ft |
| 791 Natural Brushed Aluminum | 4' x 8', 4' x 10' | Aluminum | 0.032 | | | .316 lb / sq ft |
| 796 Stainless Steel Aluminum | 4' x 8', 4' x 10' | Aluminum | 0.032 | | | .316 lb / sq ft |
| 800 Series | Sheet Size | Base Metal | HPL | Phenolic | Metal | Weight sq ft |
| 801 Polished Chrome | 2' x 8', 2' x 10' | Brass | | 0.042 | 0.016 | .706 lb / sq ft |
| 802 Satin Chrome | 2' x 8', 2' x 10' | Brass | | 0.042 | 0.016 | .706 lb / sq ft |
| 803 Polished Solid Brass | 2' x 8', 2' x 10' | Brass | | 0.042 | 0.016 | .706 lb / sq ft |
| 804 Satin Solid Brass | 2' x 8', 2' x 10' | Brass | | 0.042 | 0.016 | .706 lb / sq ft |
| 812 Satin Smoked Chrome | 2' x 8', 2' x 10' | Brass | | 0.042 | 0.016 | .706 lb / sq ft |
| 814 Satin Golden Bronze | 2' x 8', 2' x 10' | Bronze | | 0.042 | 0.016 | .731 lb / sq ft |
| 900 Series | Sheet Size | Base Metal | HPL | Phenolic | Metal | Weight sq ft |
| 901 Polished Aluminum | 4' x 8', 4' x 10' | Aluminum | | 0.055 | 0.025 | .359 lb / sq ft |
| 902 Brushed Aluminum | 4' x 8', 4' x 10' | Aluminum | | 0.055 | 0.025 | .359 lb / sq ft |
| 903 Polished Brass Aluminum | 4' x 8', 4' x 10' | Aluminum | | 0.055 | 0.025 | .359 lb / sq ft |
| 904 Brushed Light Brass Aluminum | 4' x 8', 4' x 10' | Aluminum | | 0.055 | 0.025 | .359 lb / sq ft |
| 906 Brushed Copper Aluminum | 4' x 8', 4' x 10' | Aluminum | | 0.055 | 0.025 | .359 lb / sq ft |
| 908 Satin Black Aluminum | 4' x 8', 4' x 10' | Aluminum | | 0.055 | 0.025 | .359 lb / sq ft |
| 909 Satin Silver Aluminum | 4' x 8', 4' x 10' | Aluminum | | 0.055 | 0.025 | .359 lb / sq ft |
| 910 Satin Gold Aluminum | 4' x 8', 4' x 10' | Aluminum | | 0.055 | 0.025 | .359 lb / sq ft |
| 911 Polished Smoked Aluminum | 4' x 8', 4' x 10' | Aluminum | | 0.055 | 0.025 | .359 lb / sq ft |
| 912 Satin Bronze Aluminum | 4' x 8', 4' x 10' | Aluminum | | 0.055 | 0.025 | .359 lb / sq ft |
| 914 Cross Hatch Aluminum | 4' x 8', 4' x 10' | Aluminum | | 0.055 | 0.025 | .359 lb / sq ft |
| 915 Brushed Brass Aluminum | 4' x 8', 4' x 10' | Aluminum | | 0.055 | 0.025 | .359 lb / sq ft |
| 916 Brushed Pewter Aluminum | 4' x 8', 4' x 10' | Aluminum | | 0.055 | 0.025 | .359 lb / sq ft |
| 917 Brushed Black Aluminum | 4' x 8', 4' x 10' | Aluminum | | 0.055 | 0.025 | .359 lb / sq ft |
| 924 Bronze Stainless Aluminum | 4' x 8', 4' x 10' | Aluminum | | 0.055 | 0.025 | .359 lb / sq ft |
| 925 Brushed Medium Bronze | 4' x 8', 4' x 10' | Aluminum | | 0.055 | 0.025 | .359 lb / sq ft |
| 927 Light Stainless Aluminum | 4' x 8', 4' x 10' | Aluminum | | 0.055 | 0.025 | .359 lb / sq ft |
| 928 Clear Ambient Aluminum | 4' x 8', 4' x 10' | Aluminum | | 0.055 | 0.025 | .359 lb / sq ft |
| 929 Stainless Ambient Aluminum | 4' x 8', 4' x 10' | Aluminum | | 0.055 | 0.025 | .359 lb / sq ft |
| 931 Brushed Golden Aluminum | 4' x 8', 4' x 10' | Aluminum | | 0.055 | 0.025 | .359 lb / sq ft |

Weights shown reflect standard way material is stocked.

(Shipping cont.)

Chemetal recommends that all sheets of solid metal be shipped flat. The customer assumes all responsibility for sheets of solid metal that are rolled and shipped in a carton(s). When materials are rolled, care must be taken to avoid bending. Do not compress coils. Material with a backer must have the face out. Rolling with the face in will crack the backing material. Roll loosely to a minimum diameter of 18 inches. Chemetal cannot roll sheets of 48" wide metal that are backed with a low pressure laminate backer. 48" wide low pressure laminate backer backed Chemetal must be shipped flat.

All HPL backed Chemetal (200 and 700 Series) may be rolled and shipped in a carton. It is often cost effective to ship HPL backed Chemetal flat for orders greater than four sheets.

DIRECTIONAL ARROWS ON SHEETS:

Many Chemetal designs are marked on protective mask or label with directional arrows, indicating direction of finish. With multiple sheet installations, sheets must be installed with arrows pointing in same direction, otherwise sheets may reflect light differently and not match up.

CHEMETAL SUBSTRATE AND ADHESIVE CONDITIONING:

We recommend that all Chemetal materials, and the adhesives and substrates they are to be bonded to, remain in the same environment for a period of five to seven days for optimal pre-conditioning. A minimum of 48 hours is recommended for pre-conditioning. These times are recommended although decorative metal laminates have minimal dimensional change.

Chemetal should not be used in areas exposed to water, moisture, high humidity or high heat for prolonged periods of time. Do not use Chemetal in exterior installations.

RECOMMENDED SUBSTRATES:

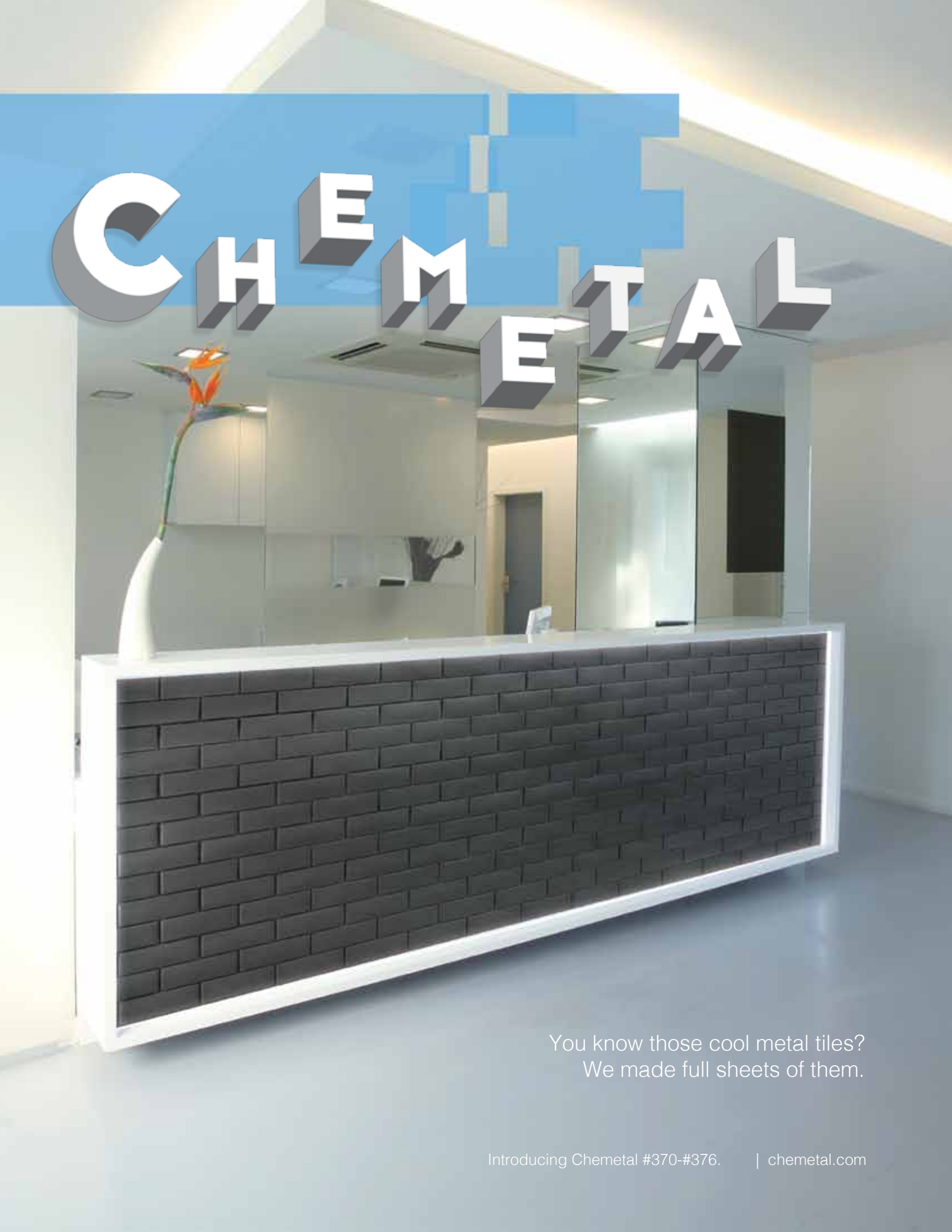
Proper substrates must be used and careful bonding procedures observed. Substrates should be good quality plywood, high density particleboard, fiberboard or MDF. Do not use drywall, plaster, concrete or gypsum board.

Substrate should be a smooth surface free of debris, dirt and imperfections. Inconsistencies in substrate surface will project through and show in finished product.

If you have questions about using Chemetal, please contact us.

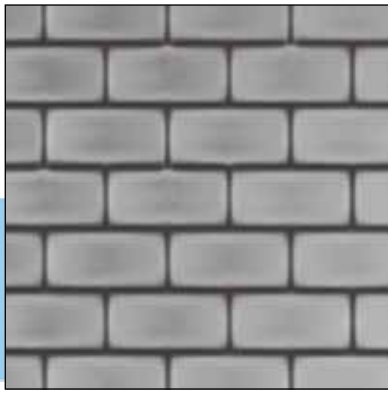
sales@chemetal.com
800 807 7341
chemetal.com

CHEMETAL

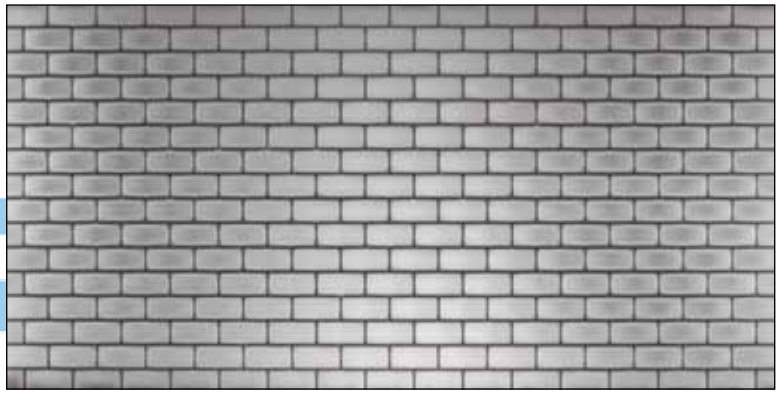


You know those cool metal tiles?
We made full sheets of them.

Introducing Chemetal #370-#376. | chemetal.com



#370 3by6 Subway Shine



Sheet Size: 4' x 8'



#371 3by6 Subway Aged



Sheet Size: 4' x 8'



#372 3by6 Subway Dark



Sheet Size: 4' x 8'



#373 3by6 Grid Aged



Sheet Size: 4' x 8'



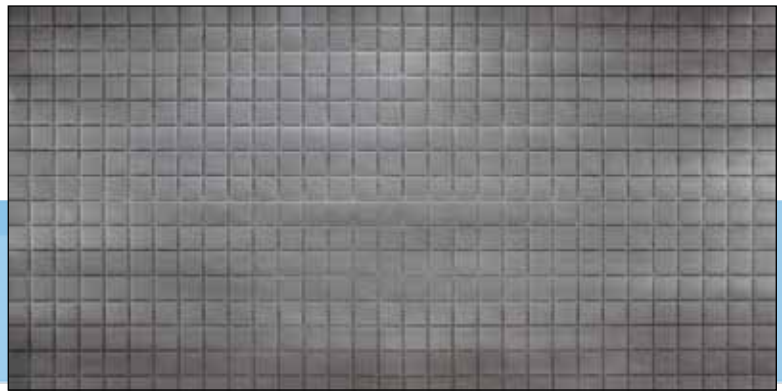
#374 3by6 Grid Dark



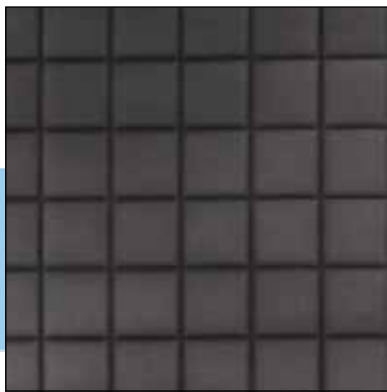
Sheet Size: 4' x 8'



#375 3by3 Aged



Sheet Size: 4' x 8'

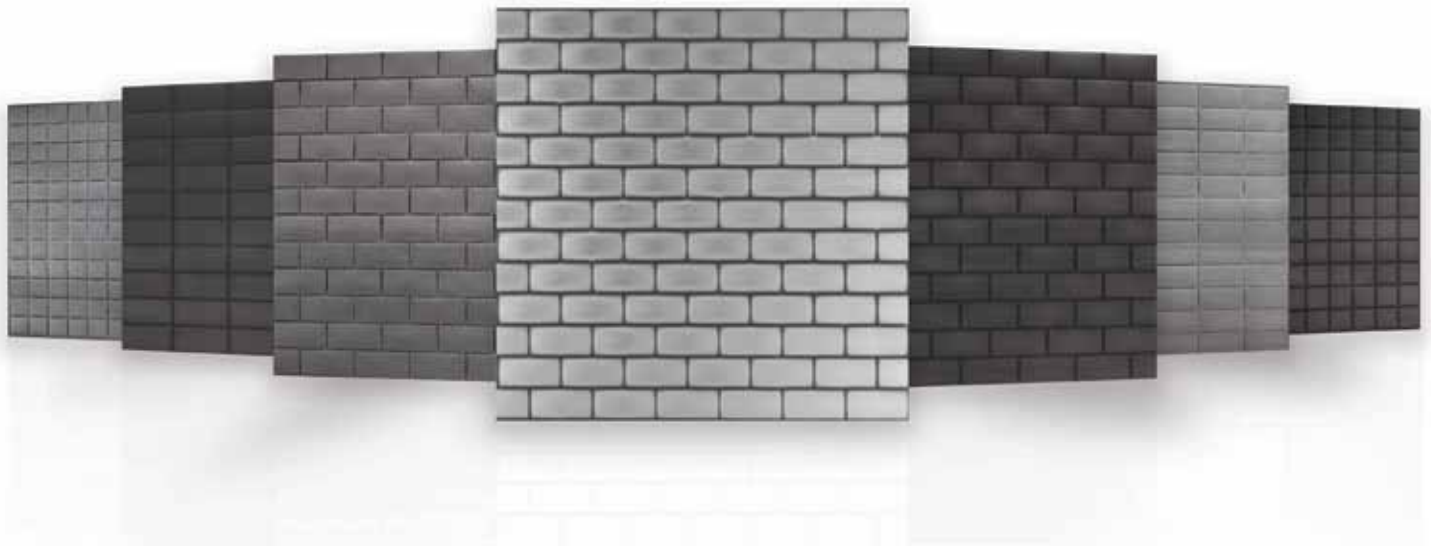


#376 3by3 Dark



Sheet Size: 4' x 8'

New Metal Tile Designs from Chemetal.



As part of our 2015 introduction, Chemetal has introduced 7 new metal tile designs. These designs offer the modern look of metal tiles in a grout free full sheet install. We patina these designs by hand and machine in our Easthampton, MA facility. Custom options are available, charges may apply. Contains recycled aluminum, may qualify for LEED.

Since these designs are larger in scale, they can't be accurately represented by smaller chip samples. Here, we've included closeup and full sheet images of the new designs. Samples are available in 8" x 10" sample size, please contact us to request the sample you want.

As seen in 4' x 8' sheet view, the pattern runs vertically on sheet. We are often promoting these sheets with pattern running horizontally, which we believe is the ideal orientation once installed. Because this design is created with a master plate, we cannot re-orient the pattern to run a different direction, except as a custom option.

These tile designs represent weathered tile designs and have natural imperfections in the surface and color variations that are an intended part of the design.

Chemetal #370-#376 Tech Info

Product Description: Solid Aluminum 4' x 8' sheets with embossed tile designs and aged appearance. Tiles represented on sheet are either 3" x 6" or 3" x 3", size is identified in product name. Ideal for vertical and light duty horizontal installation.

Product is offered as standard solid aluminum, low pressure laminate backer option. Because of the embossed design, laminate backer is affixed using contact adhesive.

Not for use in environments with direct heat, or in bathrooms or showers enclosures with direct water flow. For more complete technical info, please visit chemetal.com.

Size: 4' x 8' sheet

Weight: Approx. 10 LBS per sheet



(800) 807-7341 | sales@chemetal.com | chemetal.com

Retail Rollout!

Specified Laminates

Chemetal #353

Treefrog #64907

InteriorArts #2005



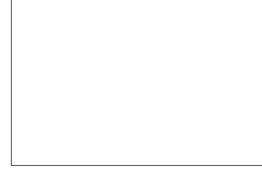
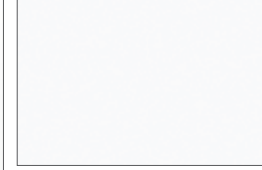



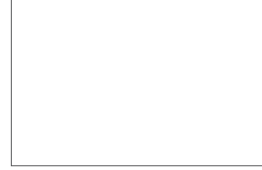

Magnetic | Dry Erase | Chalk | Image Projection | Paintable | Custom

CHEMETAL[®]

Magnetic & Dry Erase Product Reference

Key Benefits:

- Feature a thin sheet of iron (ferrous, magnetic metal) in the HPL backer.
- Makes these more magnetic than “powdered” (ferrous powder sprinkled onto HPL backer) magnetic laminates.
- Easy to cut and fabricate like laminate.

| | | | | |
|--|---|--|---|---|
|  <p>150 HPL Magnetic Board</p> <ul style="list-style-type: none"> • Magnetic • Projection (with light paint) • Paintable • Sheet Size: 4' x 8' • Thickness: .04" (1mm) |  <p>151 Black Magnetic Chalkboard</p> <ul style="list-style-type: none"> • Magnetic • Chalk • Sheet Size: 4' x 8' • Thickness: .04" (1mm) |  <p>152 White Gloss Magnetic Dry Erase</p> <ul style="list-style-type: none"> • Magnetic • Dry Erase • Sheet Size: 4' x 8', 4' x 10' • Thickness: .04" (1mm) |  <p>153 White Satin Magnetic</p> <ul style="list-style-type: none"> • Magnetic • Projection • Dry Erase (Limited, frequent cleaning required) • Sheet Size: 4' x 8' • Thickness: .04" (1mm) |  <p>157 Lime Gloss Magnetic Dry Erase</p> <ul style="list-style-type: none"> • Magnetic • Dry Erase • Sheet Size: 4' x 8' • Thickness: .04" (1mm) |
|  <p>160 White Gloss Magnetic Dry Erase Steel</p> <ul style="list-style-type: none"> • Magnetic • Dry Erase • Sheet Size: 4' x 8', 4' x 10', custom • Thickness: .023", .05" with backer • Metal fab. equip. for cutting |  <p>Custom Magnetic Laminate</p> <p>We can apply any Chemetal 400, 500, 800 (metal only), 900 or Tints Series Solid Aluminum design to #150 Magnetic Board to create a custom magnetic laminate.</p> <p>Sheet Size: 4' x 8' Thickness: .050"</p> |  <p>1030 Marker Board, from InteriorArts.</p> <ul style="list-style-type: none"> • Non Magnetic • Dry Erase • Economically priced • Sheet Size: 4' x 8' • Thickness: .03" |  <p>1031 GraphMarker Board, from InteriorArts.</p> <ul style="list-style-type: none"> • Non Magnetic • Dry Erase • Economically priced • Sheet Size: 4' x 8' • Thickness: .03" | |

Product Info:

Chemetal Magnetic Laminates (#150-157) are high pressure laminates (HPL) that contain a thin iron layer sandwiched in the HPL Backer (look at sample edge to see) creating magnetic effect when used with magnets. Ideal for vertical interior application. Surface is melamine. 4' x 8' sheets, 4' x 10' in #152.

Tech Info:

Complete tech info is available for download at chemetal.com under "Downloads." We recommend obtaining and testing a sample prior to installation.

Cleaning:

Once installed, sheets must be cleaned once mask is removed. We recommend either rubbing alcohol (found in most drug stores), hand sanitizer or dry erase board cleaner and paper towel. Sheets should also be regularly cleaned with this solution to prevent "ghosting."

#160 info:

Chemetal #160 is a steel dry erase magnetic material. It is value priced with excellent magnetic hold and a great "pure" white color. It requires metal fabrication equipment to cut. Chemetal can cut to size and apply laminate backer if requested (fee required).



Contact us for samples.

(800) 807-7341 | sales@chemetal.com | chemetal.com